

Anti-Acetyl-Histone H3-K9/K14/K18/K23/K27 antibody (STJ119904)

GENERAL INFORMATION

| | |
|---------------|-----------------------|
| Product Type | Primary antibodies |
| Applications | WB/IF/ICC/ELISA |
| Host / Source | Rabbit |
| Reactivity | Human/Mouse/Rat/Other |

PRODUCT PROPERTIES

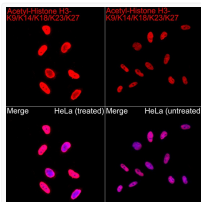
| | |
|---------------------|---|
| Clonality | Polyclonal |
| Concentration | Lot specific |
| Conjugation | Unconjugated |
| Purification | Affinity purification |
| Dilution Range | WB:1:1000-1:5000 IF/CC:1:50-1:200 ELISA:Recommended starting concentration is 1 Mu g/mL. Please optimize the concentration based on your specific assay requirements. |
| Formulation | PBS with 0.05% Proclin300, 50% Glycerol, pH 7.3. |
| Isotype | IgG |
| Molecular Weight | Protein Mw: 15kDa Observed Mw: 17kDa |
| Storage Instruction | Store at -20°C for up to 1 year from the date of receipt, and avoid repeat freeze-thaw cycles. |

TARGET INFORMATION

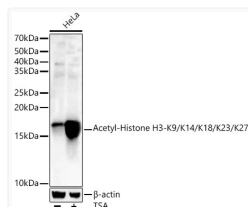
| | |
|--------------------|---|
| Gene ID | 8290 8350/8351/8352/8353/8354/8355/8356/8357/8358/8968 |
| Gene Symbol | H3-4 H3C1.H3C2.H3C3.H3C4.H3C6. |
| UniProt ID | H31T_HUMAN H31_HUMAN |
| Immunogen Sequence | KSTGGKAPRKQLATKAARK |
| Specificity | A synthetic acetylated peptide around K9 & K14 & K18 & K23 & K27 of human Histone H3 (NP_003520.1). |

ADDITIONAL INFORMATION

Note STRICTLY FOR FURTHER SCIENTIFIC RESEARCH USE ONLY (RUO). MUST NOT TO BE USED IN DIAGNOSTIC OR THERAPEUTIC APPLICATIONS.



Immunofluorescence analysis of HeLa treated with TSA (1 uM, 4 hours) and HeLa cells using Acetyl-Histone H3-K9/K14/K18/K23/K27 Rabbit polyclonal antibody (STJ119904) at a dilution of 1:100 (40x lens). Secondary antibody: Cy3 Goat Anti-Rabbit IgG (H+L) at 1:500 dilution. Blue: DAPI for nuclear staining.



Western blot analysis of lysates from HeLa cells, using Acetyl-Histone H3-K9/K14/K18/K23/K27 Rabbit polyclonal antibody (STJ119904) at 1:5000 dilution. HeLa cells were treated by TSA (1 uM) at 37 °C for 18 hours. Secondary antibody: HRP Goat Anti-Rabbit IgG (H+L) (STJS000856) at 1:10000 dilution. Lysates/proteins: 25 Mu g per lane. Blocking buffer: 3% nonfat dry milk in TBST. Detection: ECL Basic Kit. Exposure time: 10s.