

Anti-CAMK2A antibody (300-400) (STJ119903)

GENERAL INFORMATION

Product Type	Primary antibodies
Applications	WB/IF/ICC/ELISA
Host / Source	Rabbit
Reactivity	Human/Mouse/Rat

PRODUCT PROPERTIES

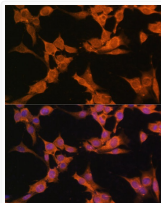
Clonality	Polyclonal
Concentration	Lot specific
Conjugation	Unconjugated
Purification	Affinity purification
Dilution Range	WB:1:500-1:1000 IF/CC:1:50-1:200 ELISA:Recommended starting concentration is 1 Mu g/mL. Please optimize the concentration based on your specific assay requirements.
Formulation	PBS with 0.09% Sodium Azide, 50% Glycerol, pH7.3.
Isotype	IgG
Molecular Weight	Protein Mw: 54kDa Observed Mw: 54kDa
Storage Instruction	Store at -20°C for up to 1 year from the date of receipt, and avoid repeat freeze-thaw cycles.

TARGET INFORMATION

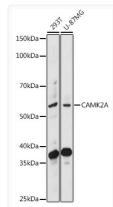
Gene ID	815
Gene Symbol	CAMK2A
UniProt ID	KCC2A_HUMAN
Immunogen Region	300-400
Immunogen Sequence	KGAILTTMLATRNFGGKSG GNKKSDBGVKESESTNTTIE DEDTKVRKQEIHKVTEQLIE AISNGDFESYTKMCDPGMTA FEPEALGNLVEGLDFHRFYF E
Specificity	A synthetic peptide corresponding to a sequence within amino acids 300-400 of human CAMK2A (NP_741960.1).

ADDITIONAL INFORMATION

Note STRICTLY FOR FURTHER SCIENTIFIC RESEARCH USE ONLY (RUO). MUST NOT TO BE USED IN DIAGNOSTIC OR THERAPEUTIC APPLICATIONS.



Immunofluorescence analysis of NIH/3T3 cells using CAMK2A Rabbit polyclonal antibody (STJ119903) at dilution of 1:100. Blue: DAPI for nuclear staining.



Western blot analysis of various lysates using CAMK2A Rabbit polyclonal antibody (STJ119903) at 1:1000 dilution. Secondary antibody: HRP Goat Anti-Rabbit IgG (H+L) (STJS000856) at 1:10000 dilution. Lysates/proteins: 25 Mu g per lane. Blocking buffer: 3% nonfat dry milk in TBST. Detection: ECL Basic Kit. Exposure time: 180s.