

## Anti-EEF1A1 antibody (301-400) (STJ119870)

### GENERAL INFORMATION

Product Type	Primary antibodies
Applications	WB/IHC-P/IF/ICC/ELISA
Host / Source	Rabbit
Reactivity	Human/Mouse/Rat

### PRODUCT PROPERTIES

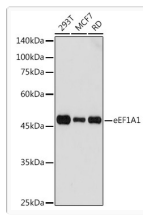
Clonality	Polyclonal
Concentration	Lot specific
Conjugation	Unconjugated
Purification	Affinity purification
Dilution Range	WB:1:500-1:1000 IHC-P:1:50-1:200 IF/CC:1:50-1:200 ELISA:Recommended starting concentration is 1 µg/mL. Please optimize the concentration based on your specific assay requirements.
Formulation	PBS with 0.01% Thimerosal, 50% Glycerol, pH 7.3.
Isotype	IgG
Molecular Weight	Protein Mw: 50kDa Observed Mw: 50kDa
Storage Instruction	Store at -20°C for up to 1 year from the date of receipt, and avoid repeat freeze-thaw cycles.

### TARGET INFORMATION

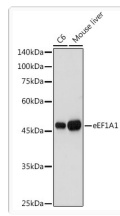
Gene ID	<a href="#">1915</a>
Gene Symbol	<a href="#">EEF1A1</a>
UniProt ID	<a href="#">EF1A1_HUMAN</a>
Immunogen Region	301-400
Immunogen Sequence	EALPGDNLVGFNVKNSVKDV RRGNVAGDSKNDPPMEAGF TAQVIILNHPGQISAGYAPV LDCHTAHIACKFAELKEKID RRSKGKLEDGPKFLKSGDAA
Specificity	A synthetic peptide corresponding to a sequence within amino acids 301-400 of human eEF1A1 (NP_001393.1).

### ADDITIONAL INFORMATION

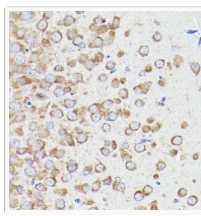
Note	STRICTLY FOR FURTHER SCIENTIFIC RESEARCH USE ONLY (RUO). MUST NOT TO BE USED IN DIAGNOSTIC OR THERAPEUTIC APPLICATIONS.
------	---



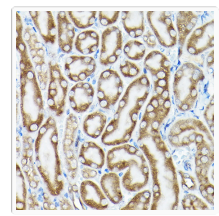
Western blot analysis of extracts of various cell lines, using eEF1A1 antibody (STJ119870) at 1:1000 dilution. Secondary antibody: HRP Goat Anti-rabbit IgG (H+L) (STJS000856) at 1:10000 dilution. Lysates/proteins: 25  $\mu$ g per lane. Blocking buffer: 3% non-fat dry milk in TBST. Detection: ECL Basic Kit. Exposure time: 3s.



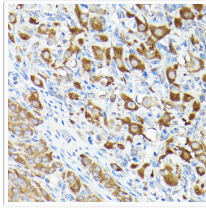
Western blot analysis of extracts of various cell lines, using eEF1A1 antibody (STJ119870) at 1:1000 dilution. Secondary antibody: HRP Goat Anti-rabbit IgG (H+L) (STJS000856) at 1:10000 dilution. Lysates/proteins: 25  $\mu$ g per lane. Blocking buffer: 3% non-fat dry milk in TBST. Detection: ECL Basic Kit. Exposure time: 10s.



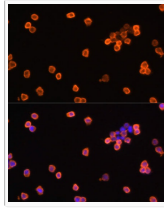
Immunohistochemistry analysis of paraffin-embedded mouse brain using eEF1A1 rabbit polyclonal antibody (STJ119870) at dilution of 1:100 (40x lens). Perform high pressure antigen retrieval with 10 mM citrate buffer pH 6.0 before commencing with immunohistochemistry staining protocol.



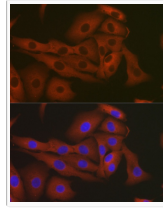
Immunohistochemistry analysis of paraffin-embedded mouse kidney using eEF1A1 rabbit polyclonal antibody (STJ119870) at dilution of 1:100 (40x lens). Perform high pressure antigen retrieval with 10 mM citrate buffer pH 6.0 before commencing with immunohistochemistry staining protocol.



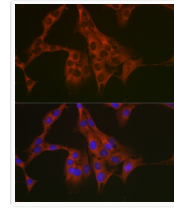
Immunohistochemistry analysis of paraffin-embedded rat ovary using eEF1A1 rabbit polyclonal antibody (STJ119870) at dilution of 1:100 (40x lens). Perform high pressure antigen retrieval with 10 mM citrate buffer pH 6.0 before commencing with immunohistochemistry staining protocol.



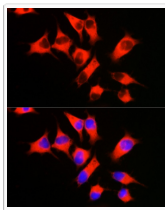
Immunofluorescence analysis of Raw264.7 cells using eEF1A1 antibody (STJ119870) at dilution of 1:100. Blue: DAPI for nuclear staining.



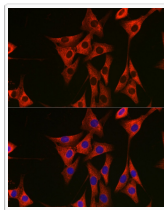
Immunofluorescence analysis of A-549 cells using eEF1A1 rabbit polyclonal antibody (STJ119870) at dilution of 1:50 (40x lens). Blue: DAPI for nuclear staining.



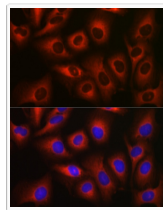
Immunofluorescence analysis of C6 cells using eEF1A1 rabbit polyclonal antibody (STJ119870) at dilution of 1:50 (40x lens). Blue: DAPI for nuclear staining.



Immunofluorescence analysis of HeLa cells using eEF1A1 rabbit polyclonal antibody (STJ119870) at dilution of 1:50 (40x lens). Blue: DAPI for nuclear staining.



Immunofluorescence analysis of NIH/3T3 cells using eEF1A1 rabbit polyclonal antibody (STJ119870) at dilution of 1:50 (40x lens). Blue: DAPI for nuclear staining.



Immunofluorescence analysis of U2OS cells using eEF1A1 rabbit polyclonal antibody (STJ119870) at dilution of 1:50 (40x lens). Blue: DAPI for nuclear staining.