

Anti-RAB7B antibody (1-199) (STJ119868)

GENERAL INFORMATION

Product Type	Primary antibodies
Applications	WB/IF/ICC/ELISA
Host / Source	Rabbit
Reactivity	Human/Mouse

PRODUCT PROPERTIES

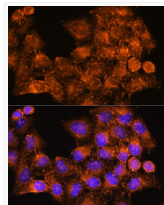
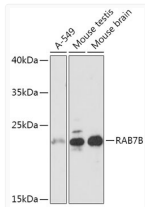
Clonality	Polyclonal
Concentration	Lot specific
Conjugation	Unconjugated
Purification	Affinity purification
Dilution Range	WB:1:500-1:2000 IF/CC:1:50-1:200 ELISA:Recommended starting concentration is 1 Mu g/mL. Please optimize the concentration based on your specific assay requirements.
Formulation	PBS with 0.05% Proclin300, 50% Glycerol, pH 7.3.
Isotype	IgG
Molecular Weight	Protein Mw: 23kDa Observed Mw: 23kDa
Storage Instruction	Store at -20°C for up to 1 year from the date of receipt, and avoid repeat freeze-thaw cycles.

TARGET INFORMATION

Gene ID	338382
Gene Symbol	RAB7B
UniProt ID	RAB7B_HUMAN
Immunogen Region	1-199
Immunogen Sequence	MNPRKKVDLKLIVGAIGVG KTSLLHQYVHKTFYEEYQTT LGASILSKIIILGDTTLLKQ IWDTGGQERFRSMVSTFYKG SDGCILAFDVTDLSEFEALD IWRGDVLAKIVPMEQSYPMV LLGNKIDLADRKVPQVEVAQG WCREKDIPYFEVSAKNDINV VQAFEMLASRALSRYSILE NHLTESIKLSPDQSRSRCC
Specificity	Recombinant fusion protein containing a sequence corresponding to amino acids 1-199 of human RAB7B (NP_001157994.1).

ADDITIONAL INFORMATION

Note **STRICTLY FOR FURTHER SCIENTIFIC RESEARCH USE ONLY (RUO). MUST NOT TO BE USED IN DIAGNOSTIC OR THERAPEUTIC APPLICATIONS.**



Western blot analysis of various lysates using RAB7B Rabbit pAb (STJ119868) at 1:1000 dilution.

Secondary antibody: HRP-conjugated Goat anti-Rabbit IgG (H+L) (STJS000856) at 1:10000 dilution.

Lysates/proteins: 25 Mu g per lane.
Blocking buffer: 3% nonfat dry milk in TBST.
Detection: ECL Basic Kit
Exposure time: 3s.

Immunofluorescence analysis of HeLa cells using RAB7B Rabbit pAb (STJ119868) at dilution of 1:100. Secondary antibody: Cy3-conjugated Goat anti-Rabbit IgG (H+L) (STJS001166) at 1:500 dilution. Blue: DAPI for nuclear staining.