

Anti-TUBGCP5 antibody (100-200) (STJ119840)

GENERAL INFORMATION

Product Type	Primary antibodies
Applications	WB/ELISA
Host / Source	Rabbit
Reactivity	Rat

PRODUCT PROPERTIES

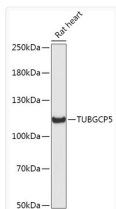
Clonality	Polyclonal
Concentration	Lot specific
Conjugation	Unconjugated
Purification	Affinity purification
Dilution Range	WB:1:500-1:2000 ELISA:Recommended starting concentration is 1 µg/mL. Please optimize the concentration based on your specific assay requirements.
Formulation	PBS with 0.01% Thimerosal, 50% Glycerol, pH 7.3.
Isotype	IgG
Molecular Weight	Protein Mw: 118kDa Observed Mw: 118kDa
Storage Instruction	Store at -20°C for up to 1 year from the date of receipt, and avoid repeat freeze-thaw cycles.

TARGET INFORMATION

Gene ID	114791
Gene Symbol	TUBGCP5
UniProt ID	GCP5_HUMAN
Immunogen Region	100-200
Immunogen Sequence	KEIKTDAHYSILSLLCLSD SPSNSSYVETPRNKEVEKKD DFDWGKYLMEDEEMDIGPYM DTPNWSEEESEENDQQPLSR EDSGIQVDRTPLEEQDQNRK L
Specificity	A synthetic peptide corresponding to a sequence within amino acids 100-200 of human TUBGCP5 (NP_443135.3).

ADDITIONAL INFORMATION

Note STRICTLY FOR FURTHER SCIENTIFIC RESEARCH USE ONLY (RUO). MUST NOT TO BE USED IN DIAGNOSTIC OR THERAPEUTIC APPLICATIONS.



Western blot analysis of lysates from Rat heart, using TUBGCP5 Rabbit polyclonal antibody (STJ119840) at 1:1000 dilution. Secondary antibody: HRP Goat Anti-Rabbit IgG (H+L) (STJS000856) at 1:10000 dilution. Lysates/proteins: 25 µg per lane. Blocking buffer: 3% nonfat dry milk in TBST. Detection: ECL Enhanced Kit. Exposure time: 90s.