

Anti-CPA4 antibody (114-280) (STJ119744)

GENERAL INFORMATION

Product Type	Primary antibodies
Applications	WB/ELISA
Host / Source	Rabbit
Reactivity	Human/Mouse/Rat

PRODUCT PROPERTIES

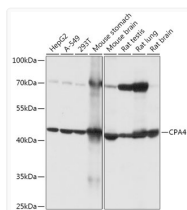
Clonality	Polyclonal
Concentration	Lot specific
Conjugation	Unconjugated
Purification	Affinity purification
Dilution Range	WB:1:500-1:2000 ELISA:Recommended starting concentration is 1 µg/mL. Please optimize the concentration based on your specific assay requirements.
Formulation	PBS with 0.01% Thimerosal, 50% Glycerol, pH 7.3.
Isotype	IgG
Molecular Weight	Protein Mw: 47kDa Observed Mw: 47kDa
Storage Instruction	Store at -20°C for up to 1 year from the date of receipt, and avoid repeat freeze-thaw cycles.

TARGET INFORMATION

Gene ID	51200
Gene Symbol	CPA4
UniProt ID	CBPA4_HUMAN
Immunogen Region	114-280
Immunogen Sequence	SSNNFNYGAYHSLEAIYHEM DNIAADFPDLARRVKIGHSF ENRPMYVLKFSTGKGVRRPA VWLNAGIHSREWISQATAIW TARKIVSDYQRDPAITSILE KMDIFLLPVANPDGYVYTQT QNRLWRKTRSRNPGSSCIGA DPNRNWNASFAGKGASDNPC SEVYHGP
Specificity	Recombinant fusion protein containing a sequence corresponding to amino acids 114-280 of human CPA4 (NP_057436.2).

ADDITIONAL INFORMATION

Note STRICTLY FOR FURTHER SCIENTIFIC RESEARCH USE ONLY (RUO). MUST NOT TO BE USED IN DIAGNOSTIC OR THERAPEUTIC APPLICATIONS.



Western blot analysis of various lysates using CPA4 Rabbit polyclonal antibody (STJ119744) at 1:1000 dilution. Secondary antibody: HRP Goat Anti-Rabbit IgG (H+L) (STJS000856) at 1:10000 dilution. Lysates/proteins: 25 µg per lane. Blocking buffer: 3% nonfat dry milk in TBST. Detection: ECL Basic Kit. Exposure time: 5s.