

Anti-ALG5 antibody (34-190) (STJ119736)

GENERAL INFORMATION

Product Type	Primary antibodies
Applications	WB/IHC-P/IF/ICC/ELISA
Host / Source	Rabbit
Reactivity	Human/Mouse/Rat

PRODUCT PROPERTIES

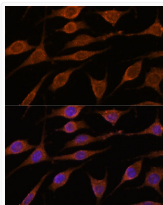
Clonality	Polyclonal
Concentration	Lot specific
Conjugation	Unconjugated
Purification	Affinity purification
Dilution Range	WB:1:500-1:2000 IHC-P:1:50-1:200 IF/ICC:1:50-1:200 ELISA:Recommended starting concentration is 1 Mu g/mL. Please optimize the concentration based on your specific assay requirements.
Formulation	PBS with 0.01% Thimerosal, 50% Glycerol, pH 7.3.
Isotype	IgG
Molecular Weight	Protein Mw: 37kDa Observed Mw: 37kDa
Storage Instruction	Store at -20°C for up to 1 year from the date of receipt, and avoid repeat freeze-thaw cycles.

TARGET INFORMATION

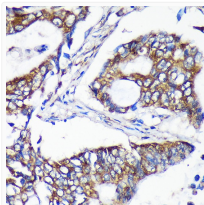
Gene ID	29880
Gene Symbol	ALG5
UniProt ID	ALG5_HUMAN
Immunogen Region	34-190
Immunogen Sequence	MPALHRHEEEKFFLNAKGQK ETLPSIWDSPTKQLSVVPS YNEEKRLPVMMDALSYLEK RQKRDPAFITYEIVVDDGSK DQTSKVAFKYCQKYGSDKVR VITLVKNRKGGAIRMGIFS SRGEKILMADADGATKFPDV EKLEKGLNDLQPWPNQM
Specificity	Recombinant fusion protein containing a sequence corresponding to amino acids 34-190 of human ALG5 (NP_037470.1).

ADDITIONAL INFORMATION

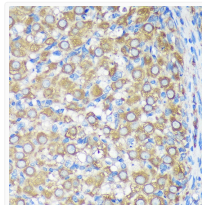
Note **STRICTLY FOR FURTHER SCIENTIFIC RESEARCH USE ONLY (RUO). MUST NOT TO BE USED IN DIAGNOSTIC OR THERAPEUTIC APPLICATIONS.**



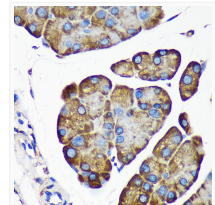
Immunofluorescence analysis of L929 cells using ALG5 Rabbit polyclonal antibody (STJ119736) at dilution of 1:100. Secondary antibody: Cy3 Goat Anti-Rabbit IgG (H+L) at 1:500 dilution. Blue: DAPI for nuclear staining.



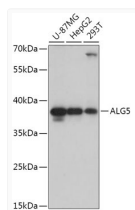
Immunohistochemistry analysis of ALG5 in paraffin-embedded Human colon carcinoma using ALG5 Rabbit polyclonal antibody (STJ119736) at dilution of 1:100 (40x lens). Perform microwave antigen retrieval with 10 mM PBS buffer pH 7. 2 before commencing with immunohistochemistry staining protocol.



Immunohistochemistry analysis of ALG5 in paraffin-embedded Rat ovary using ALG5 Rabbit polyclonal antibody (STJ119736) at dilution of 1:100 (40x lens). Perform microwave antigen retrieval with 10 mM PBS buffer pH 7. 2 before commencing with immunohistochemistry staining protocol.



Immunohistochemistry analysis of ALG5 in paraffin-embedded Mouse pancreas using ALG5 Rabbit polyclonal antibody (STJ119736) at dilution of 1:100 (40x lens). Perform microwave antigen retrieval with 10 mM PBS buffer pH 7. 2 before commencing with immunohistochemistry staining protocol.



Western blot analysis of various lysates using ALG5 Rabbit polyclonal antibody (STJ119736) at 1:1000 dilution. Secondary antibody: HRP Goat Anti-Rabbit IgG (H+L) (STJS000856) at 1:10000 dilution. Lysates/proteins: 25 Mu g per lane. Blocking buffer: 3% nonfat dry milk in TBST. Detection: ECL Basic Kit. Exposure time: 90s.