

## Anti-ANKLE2 antibody (350-450) (STJ119707)

### GENERAL INFORMATION

Product Type	Primary antibodies
Applications	WB/IHC-P/ELISA
Host / Source	Rabbit
Reactivity	Human/Mouse/Rat

### PRODUCT PROPERTIES

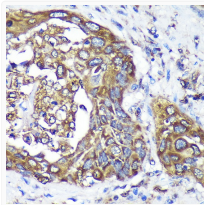
Clonality	Polyclonal
Concentration	Lot specific
Conjugation	Unconjugated
Purification	Affinity purification
Dilution Range	WB:1:500-1:2000 IHC-P:1:50-1:200 ELISA:Recommended starting concentration is 1 µg/mL. Please optimize the concentration based on your specific assay requirements.
Formulation	PBS with 0.01% Thimerosal, 50% Glycerol, pH 7.3.
Isotype	IgG
Molecular Weight	Protein Mw: 104kDa Observed Mw: 104kDa
Storage Instruction	Store at -20°C for up to 1 year from the date of receipt, and avoid repeat freeze-thaw cycles.

### TARGET INFORMATION

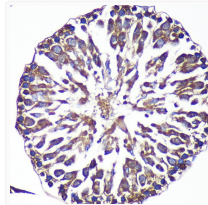
Gene ID	<a href="#">23141</a>
Gene Symbol	<a href="#">ANKLE2</a>
UniProt ID	<a href="#">ANKL2_HUMAN</a>
Immunogen Region	350-450
Immunogen Sequence	CRYNVMHVAAKENQASICQL TLDVLENPDFMRLMYPDDDE AMLQKRIRYVVDLYLNTDPK MGYDTPHLHFACKFGNADVVN VLSSHHLIVKNSRNKYDKTP E
Specificity	Recombinant fusion protein containing a sequence corresponding to amino acids 350-450 of human ANKLE2 (NP_055929.1).

### ADDITIONAL INFORMATION

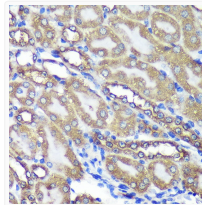
Note STRICTLY FOR FURTHER SCIENTIFIC RESEARCH USE ONLY (RUO). MUST NOT TO BE USED IN DIAGNOSTIC OR THERAPEUTIC APPLICATIONS.



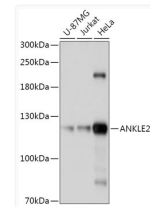
Immunohistochemistry analysis of ANKLE2 in paraffin-embedded Human lung cancer using ANKLE2 Rabbit polyclonal antibody (STJ119707) at dilution of 1:100 (40x lens). Perform microwave antigen retrieval with 10 mM PBS buffer pH 7.2 before commencing with immunohistochemistry staining protocol.



Immunohistochemistry analysis of ANKLE2 in paraffin-embedded Rat testis using ANKLE2 Rabbit polyclonal antibody (STJ119707) at dilution of 1:100 (40x lens). Perform microwave antigen retrieval with 10 mM PBS buffer pH 7.2 before commencing with immunohistochemistry staining protocol.



Immunohistochemistry analysis of ANKLE2 in paraffin-embedded Mouse kidney using ANKLE2 Rabbit polyclonal antibody (STJ119707) at dilution of 1:100 (40x lens). Perform microwave antigen retrieval with 10 mM PBS buffer pH 7.2 before commencing with immunohistochemistry staining protocol.



Western blot analysis of various lysates using ANKLE2 Rabbit polyclonal antibody (STJ119707) at 1:1000 dilution. Secondary antibody: HRP Goat Anti-Rabbit IgG (H+L) (STJS000856) at 1:10000 dilution. Lysates/proteins: 25 µg per lane. Blocking buffer: 3% nonfat dry milk in TBST. Detection: ECL Basic Kit. Exposure time: 10s.