

## Anti-CA5B antibody (1-317) (STJ119691)

### GENERAL INFORMATION

Product Type	Primary antibodies
Applications	WB/IF/ICC/ELISA
Host / Source	Rabbit
Reactivity	Human/Mouse/Rat

### PRODUCT PROPERTIES

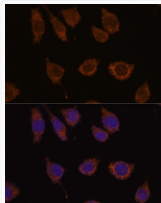
Clonality	Polyclonal
Concentration	Lot specific
Conjugation	Unconjugated
Purification	Affinity purification
Dilution Range	WB:1:500-1:2000 IF/CC:1:50-1:200 ELISA:Recommended starting concentration is 1 $\mu$ g/mL. Please optimize the concentration based on your specific assay requirements.
Formulation	PBS with 0.05% Proclin300, 50% Glycerol, pH 7.3.
Isotype	IgG
Molecular Weight	Protein Mw: 36kDa Observed Mw: 32kDa
Storage Instruction	Store at -20°C for up to 1 year from the date of receipt, and avoid repeat freeze-thaw cycles.

### TARGET INFORMATION

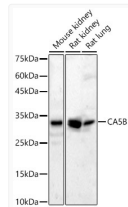
Gene ID	<a href="#">11238</a>
Gene Symbol	<a href="#">CA5B</a>
UniProt ID	<a href="#">CAH5B_HUMAN</a>
Immunogen Region	1-317
Immunogen Sequence	MVVMNSLRVILQASPGKLLW RKFQIPRFMPARPCSLYTCT YKTRNRALHPLWESVDLVPG GDRQSPINIRWRDSVYDPGL KPLTISYDPATCLHWVWNGY SFLVEFEDSTDKSVIKGGPL EHNYRLKQFHFWGAWG SEHTVDSKCFPAELHLVHWN AVRFEFEDAALAEENGLAVI GVFLKLGKHHKELQKLVDTL PSIKHKDALVEFGSFDPSCL MPTCPDYWTYSGSLTTPPL
Specificity	Recombinant fusion protein containing a sequence corresponding to amino acids 1-317 of human CA5B (NP_009151.1).

### ADDITIONAL INFORMATION

Note STRICTLY FOR FURTHER SCIENTIFIC RESEARCH USE ONLY (RUO). MUST NOT TO BE USED IN DIAGNOSTIC OR THERAPEUTIC APPLICATIONS.



Immunofluorescence analysis of L929 cells using CA5B antibody (STJ119691) at dilution of 1:100. Blue: DAPI for nuclear staining.



Western blot analysis of various lysates, using CA5B Rabbit polyclonal antibody (STJ119691) at 1:1000 dilution. Secondary antibody: HRP Goat Anti-Rabbit IgG (H+L) (STJS000856) at 1:10000 dilution. Lysates/proteins: 25 $\mu$ g per lane. Blocking buffer: 3% nonfat dry milk in TBST. Detection: ECL Basic Kit. Exposure time: 90s.