

## Anti-BAZ2A antibody (97-295) (STJ119689)

### GENERAL INFORMATION

Product Type	Primary antibodies
Applications	WB/IHC-P/IF/ICC/ELISA
Host / Source	Rabbit
Reactivity	Human/Mouse/Rat

### PRODUCT PROPERTIES

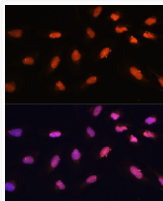
Clonality	Polyclonal
Concentration	Lot specific
Conjugation	Unconjugated
Purification	Affinity purification
Dilution Range	WB:1:500-1:2000 IHC-P:1:50-1:100 IF/CC:1:50-1:200 ELISA:Recommended starting concentration is 1 µg/mL. Please optimize the concentration based on your specific assay requirements.
Formulation	PBS with 0.01% Thimerosal, 50% Glycerol, pH 7.3.
Isotype	IgG
Molecular Weight	Protein Mw: 211kDa Observed Mw: 280-310kDa
Storage Instruction	Store at -20°C for up to 1 year from the date of receipt, and avoid repeat freeze-thaw cycles.

### TARGET INFORMATION

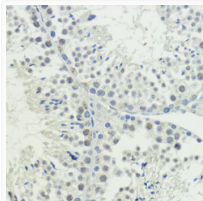
Gene ID	<a href="#">11176</a>
Gene Symbol	<a href="#">BAZ2A</a>
UniProt ID	<a href="#">BAZ2A_HUMAN</a>
Immunogen Region	97-295
Immunogen Sequence	QYPSANPGSNLKDPPLLSQF SGGQYPLNGILGGSRQPSSP SHNTNLRAGSQEFWANGTQS PMGLNFDQSQELYDSFPDQNF EVMPPNGPPSFFTSPQTSPML GSSIQTFAPSQEVGSGIHPD EAAEKEMTSVVAENGTGLVG SLELEEEQPELKMCGYNGSV PSVESLHQEVSVLVPDPTVS CLDDPSHLPDQLEDTPILS
Specificity	Recombinant fusion protein containing a sequence corresponding to amino acids 97-295 of human BAZ2A (NP_038477.2).

### ADDITIONAL INFORMATION

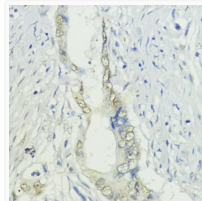
Note **STRICTLY FOR FURTHER SCIENTIFIC RESEARCH USE ONLY (RUO). MUST NOT TO BE USED IN DIAGNOSTIC OR THERAPEUTIC APPLICATIONS.**



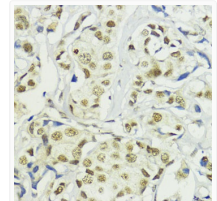
Immunofluorescence analysis of U-2 OS cells using BAZ2A Rabbit polyclonal antibody (STJ119689) at dilution of 1:100. Secondary antibody: Cy3 Goat Anti-Rabbit IgG (H+L) at 1:500 dilution. Blue: DAPI for nuclear staining.



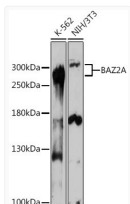
Immunohistochemistry analysis of BAZ2A in paraffin-embedded mouse testis using BAZ2A Rabbit polyclonal antibody (STJ119689) at dilution of 1:200 (40x lens). Perform microwave antigen retrieval with 10 mM PBS buffer pH 7.2 before commencing with immunohistochemistry staining protocol.



Immunohistochemistry analysis of BAZ2A in paraffin-embedded human colon carcinoma using BAZ2A Rabbit polyclonal antibody (STJ119689) at dilution of 1:200 (40x lens). Perform microwave antigen retrieval with 10 mM PBS buffer pH 7.2 before commencing with immunohistochemistry staining protocol.



Immunohistochemistry analysis of BAZ2A in paraffin-embedded human mammary cancer using BAZ2A Rabbit polyclonal antibody (STJ119689) at dilution of 1:200 (40x lens). Perform microwave antigen retrieval with 10 mM PBS buffer pH 7.2 before commencing with immunohistochemistry staining protocol.



Western blot analysis of various lysates using BAZ2A Rabbit polyclonal antibody (STJ119689) at 1:1000 dilution. Secondary antibody: HRP Goat Anti-Rabbit IgG (H+L) (STJS000856) at 1:10000 dilution. Lysates/proteins: 25 µg per lane. Blocking buffer: 3% nonfat dry milk in TBST. Detection: ECL Basic Kit. Exposure time: 180s.