

Anti-ZPBP antibody (45-200) (STJ119686)

GENERAL INFORMATION

Product Type	Primary antibodies
Applications	WB/IHC-P/IF/ICC/ELISA
Host / Source	Rabbit
Reactivity	Human/Mouse/Rat

PRODUCT PROPERTIES

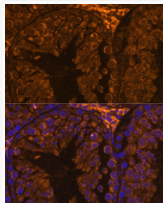
Clonality	Polyclonal
Concentration	Lot specific
Conjugation	Unconjugated
Purification	Affinity purification
Dilution Range	WB:1:500-1:2000 IHC-P:1:50-1:200 IF/CC:1:50-1:200 ELISA:Recommended starting concentration is 1 Mu g/mL. Please optimize the concentration based on your specific assay requirements.
Formulation	PBS with 0.01% Thimerosal, 50% Glycerol, pH 7.3.
Isotype	IgG
Molecular Weight	Protein Mw: 40kDa Observed Mw: 34kDa
Storage Instruction	Store at -20°C for up to 1 year from the date of receipt, and avoid repeat freeze-thaw cycles.

TARGET INFORMATION

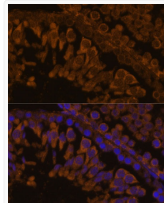
Gene ID	11055
Gene Symbol	ZPBP
UniProt ID	ZPBP1_HUMAN
Immunogen Region	45-200
Immunogen Sequence	HLVRLPRAFRLTKDSVKIVG STSFPVKAYVMLHQKSPHVL CVTQQLRNAELIDPSFQWYG PKGKVVSVENRTAQITSTGS LVFQNFEEESMSGIYTCFLEY KPTVEEIVKRLQLKYAIYAY REPHYYYQFTARYHAAPCNS IYNISFEKLLQLSK
Specificity	Recombinant fusion protein containing a sequence corresponding to amino acids 45-200 of human ZPBP (NP_008940.2).

ADDITIONAL INFORMATION

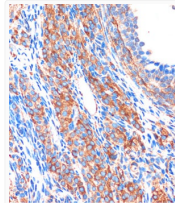
Note **STRICTLY FOR FURTHER SCIENTIFIC RESEARCH USE ONLY (RUO). MUST NOT TO BE USED IN DIAGNOSTIC OR THERAPEUTIC APPLICATIONS.**



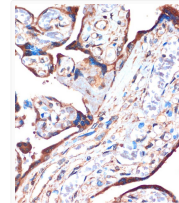
Immunofluorescence analysis of paraffin-embedded mouse testis using ZPBP Rabbit polyclonal antibody (STJ119686) at dilution of 1:100. Secondary antibody: Cy3 Goat Anti-Rabbit IgG (H+L) at 1:500 dilution. Blue: DAPI for nuclear staining.



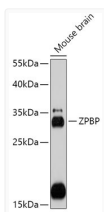
Immunofluorescence analysis of paraffin-embedded rat testis using ZPBP Rabbit polyclonal antibody (STJ119686) at dilution of 1:100. Secondary antibody: Cy3 Goat Anti-Rabbit IgG (H+L) at 1:500 dilution. Blue: DAPI for nuclear staining.



Immunohistochemistry analysis of ZPBP in paraffin-embedded Rat ovary using ZPBP Rabbit polyclonal antibody (STJ119686) at dilution of 1:100 (40x lens). Perform microwave antigen retrieval with 10 mM PBS buffer pH 7.2 before commencing with immunohistochemistry staining protocol.



Immunohistochemistry analysis of ZPBP in paraffin-embedded Human placenta using ZPBP Rabbit polyclonal antibody (STJ119686) at dilution of 1:100 (40x lens). Perform microwave antigen retrieval with 10 mM PBS buffer pH 7.2 before commencing with immunohistochemistry staining protocol.



Western blot analysis of lysates from Mouse brain, using ZPBP Rabbit polyclonal antibody (STJ119686) at 1:1000 dilution. Secondary antibody: HRP Goat Anti-Rabbit IgG (H+L) (STJS000856) at 1:10000 dilution. Lysates/proteins: 25 Mu g per lane. Blocking buffer: 3% nonfat dry milk in TBST. Detection: ECL Basic Kit. Exposure time: 30s.