

## Anti-SUPT7L antibody (210-400) (STJ119667)

### GENERAL INFORMATION

Product Type	Primary antibodies
Applications	WB/ELISA
Host / Source	Rabbit
Reactivity	Human/Mouse/Rat

### PRODUCT PROPERTIES

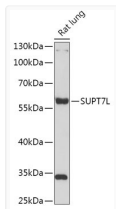
Clonality	Polyclonal
Concentration	Lot specific
Conjugation	Unconjugated
Purification	Affinity purification
Dilution Range	WB:1:500-1:2000 ELISA:Recommended starting concentration is 1 µg/mL. Please optimize the concentration based on your specific assay requirements.
Formulation	PBS with 0.01% Thimerosal, 50% Glycerol, pH 7.3.
Isotype	IgG
Molecular Weight	Protein Mw: 46kDa Observed Mw: 60kDa
Storage Instruction	Store at -20°C for up to 1 year from the date of receipt, and avoid repeat freeze-thaw cycles.

### TARGET INFORMATION

Gene ID	<a href="#">9913</a>
Gene Symbol	<a href="#">SUPT7L</a>
UniProt ID	<a href="#">ST65G_HUMAN</a>
Immunogen Region	210-400
Immunogen Sequence	TPFPDVMEQVFHEVIGIGSVL SLQKFWQHRIKDYHSYMLQI SKQLSEYERIVNPEKATED AKPVKIKEEPVSDITFPVSE ELEADLASGDQSLPMGVLGA QSERFPSNLEVEASPOASSA EVNASPLWNLAHVKMEPQES EEGNVSGHGVLSGVDFEEM SGMSEAGIPQSPDDSDSSYG SHSTDSLMGSS
Specificity	Recombinant fusion protein containing a sequence corresponding to amino acids 210-400 of human SUPT7L (NP_001269658).

### ADDITIONAL INFORMATION

Note **STRICTLY FOR FURTHER SCIENTIFIC RESEARCH USE ONLY (RUO). MUST NOT TO BE USED IN DIAGNOSTIC OR THERAPEUTIC APPLICATIONS.**



Western blot analysis of lysates from Rat lung, using SUPT7L Rabbit polyclonal antibody (STJ119667) at 1:1000 dilution. Secondary antibody: HRP Goat Anti-Rabbit IgG (H+L) (STJS00856) at 1:10000 dilution. Lysates/proteins: 25 µg per lane. Blocking buffer: 3% nonfat dry milk in TBST. Detection: ECL Basic Kit. Exposure time: 15s.