

Anti-MGAM antibody (860-1090) (STJ119655)

GENERAL INFORMATION

Product Type	Primary antibodies
Applications	WB/ELISA
Host / Source	Rabbit
Reactivity	Human

PRODUCT PROPERTIES

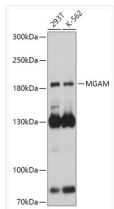
Clonality	Polyclonal
Concentration	Lot specific
Conjugation	Unconjugated
Purification	Affinity purification
Dilution Range	WB:1:500-1:2000 ELISA:Recommended starting concentration is 1 µg/mL. Please optimize the concentration based on your specific assay requirements.
Formulation	PBS with 0.01% Thimerosal, 50% Glycerol, pH 7.3.
Isotype	IgG
Molecular Weight	Protein Mw: 312kDa Observed Mw: 190kDa
Storage Instruction	Store at -20°C for up to 1 year from the date of receipt, and avoid repeat freeze-thaw cycles.

TARGET INFORMATION

Gene ID	8972
Gene Symbol	MGAM
UniProt ID	MGA_HUMAN
Immunogen Region	860-1090
Immunogen Sequence	ETKDTVANKVYLLCEFSVTQ NRLEVNISQSTYKDPNNLAF NEIKILGTEEPSNVTVKHNG VPSQTSPTVTYDSNLKVAII TDIDLLLGEAYTVEWSIKIR DEEKIDCYPDENGASAENCT ARGCIWEASNSSGVPFCYFV NDLYSVDVQYNHSGATADI SLKSSVYANAFSTPVNPLR LDVTYHKNEMLQFKIYDPNK NRYEVPVPLNIPSMPSSTPE GQLYDVLIKKN
Specificity	Recombinant fusion protein containing a sequence corresponding to amino acids 860-1090 of human MGAM (NP_004659.2).

ADDITIONAL INFORMATION

Note STRICTLY FOR FURTHER SCIENTIFIC RESEARCH USE ONLY (RUO). MUST NOT TO BE USED IN DIAGNOSTIC OR THERAPEUTIC APPLICATIONS.



Western blot analysis of various lysates using MGAM Rabbit polyclonal antibody (STJ119655) at 1:1000 dilution. Secondary antibody: HRP Goat Anti-Rabbit IgG (H+L) (STJS000856) at 1:10000 dilution. Lysates/proteins: 25 µg per lane. Blocking buffer: 3% nonfat dry milk in TBST. Detection: ECL Basic Kit. Exposure time: 5s.