

Anti-PNLIPRP1 antibody (298-467) (STJ119613)

GENERAL INFORMATION

Product Type	Primary antibodies
Applications	WB/IHC-P/IF/ICC/ELISA
Host / Source	Rabbit
Reactivity	Human/Mouse/Rat

PRODUCT PROPERTIES

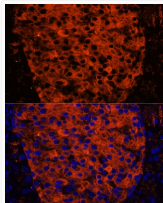
Clonality	Polyclonal
Concentration	Lot specific
Conjugation	Unconjugated
Purification	Affinity purification
Dilution Range	WB:1:500-1:2000 IHC-P:1:100-1:200 IF/CC:1:50-1:200 ELISA:Recommended starting concentration is 1 Mu g/mL. Please optimize the concentration based on your specific assay requirements.
Formulation	PBS with 0.01% Thimerosal, 50% Glycerol, pH 7.3.
Isotype	IgG
Molecular Weight	Protein Mw: 52kDa Observed Mw: 52kDa
Storage Instruction	Store at -20°C for up to 1 year from the date of receipt, and avoid repeat freeze-thaw cycles.

TARGET INFORMATION

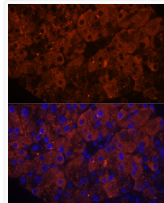
Gene ID	5407
Gene Symbol	PNLIPRP1
UniProt ID	LIPR1_HUMAN
Immunogen Region	298-467
Immunogen Sequence	FAAYPCTSYKSFESDKCFPC PDQGCPQMGHYADKFAGRTS EEQKFFLNTGEASNFARWR YGVSITLSGRATATGQIKVAL FGNKGNTHQYSIFRGILKPG STHSYEFDAKLDVGTIEKVK FLWNNNVINPTLPKVGATKI TVQKGEEKTVYNFCS EDTLLTLTPC
Specificity	Recombinant fusion protein containing a sequence corresponding to amino acids 298-467 of human PNLIPRP1 (NP_006220.1).

ADDITIONAL INFORMATION

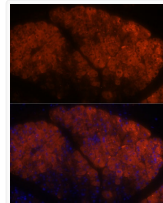
Note STRICTLY FOR FURTHER SCIENTIFIC RESEARCH USE ONLY (RUO). MUST NOT TO BE USED IN DIAGNOSTIC OR THERAPEUTIC APPLICATIONS.



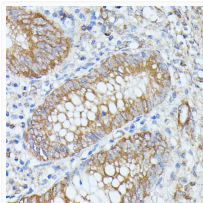
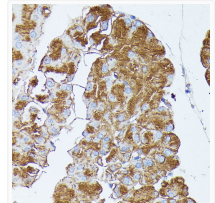
Immunofluorescence analysis of paraffin-embedded mouse pancreas using PNLIPRP1 Rabbit polyclonal antibody (STJ119613) at dilution of 1:100. Secondary antibody: Cy3 Goat Anti-Rabbit IgG (H+L) at 1:500 dilution. Blue: DAPI for nuclear staining.



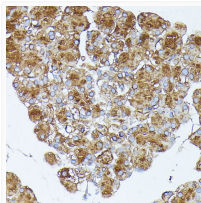
Immunofluorescence analysis of paraffin-embedded rat pancreas using PNLIPRP1 Rabbit polyclonal antibody (STJ119613) at dilution of 1:100. Secondary antibody: Cy3 Goat Anti-Rabbit IgG (H+L) at 1:500 dilution. Blue: DAPI for nuclear staining.



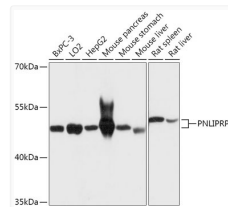
Immunohistochemistry analysis of PNLIPRP1 in paraffin-embedded mouse pancreas using PNLIPRP1 Rabbit polyclonal antibody (STJ119613) at dilution of 1:100 (40x lens). Perform microwave antigen retrieval with 10 mM PBS buffer pH 7.2 before commencing with immunohistochemistry staining protocol.



Immunohistochemistry analysis of PNLIPRP1 in paraffin-embedded human appendix using PNLIPRP1 Rabbit polyclonal antibody (STJ119613) at dilution of 1:100 (40x lens). Perform microwave antigen retrieval with 10 mM PBS buffer pH 7.2 before commencing with immunohistochemistry staining protocol.



Immunohistochemistry analysis of PNLIPRP1 in paraffin-embedded rat pancreas using PNLIPRP1 Rabbit polyclonal antibody (STJ119613) at dilution of 1:100 (40x lens). Perform microwave antigen retrieval with 10 mM PBS buffer pH 7.2 before commencing with immunohistochemistry staining protocol.



Western blot analysis of various lysates using PNLIPRP1 Rabbit polyclonal antibody (STJ119613) at 1:1000 dilution. Secondary antibody: HRP Goat Anti-Rabbit IgG (H+L) (STJS000856) at 1:10000 dilution. Lysates/proteins: 25 Mu g per lane. Blocking buffer: 3% nonfat dry milk in TBST. Detection: ECL Basic Kit. Exposure time: 5s.