

Anti-PAX1 antibody (313-328) (STJ119605)

GENERAL INFORMATION

Product Type	Primary antibodies
Applications	WB/ELISA
Host / Source	Rabbit
Reactivity	Human

PRODUCT PROPERTIES

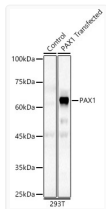
Clonality	Polyclonal
Concentration	Lot specific
Conjugation	Unconjugated
Purification	Affinity purification
Dilution Range	WB:1:500-1:2000 ELISA:Recommended starting concentration is 1 µg/mL. Please optimize the concentration based on your specific assay requirements.
Formulation	PBS with 0.05% Proclin300, 50% Glycerol, pH 7.3.
Isotype	IgG
Molecular Weight	Protein Mw: 55kDa Observed Mw: 60kDa
Storage Instruction	Store at -20°C for up to 1 year from the date of receipt, and avoid repeat freeze-thaw cycles.

TARGET INFORMATION

Gene ID	5075
Gene Symbol	PAX1
UniProt ID	PAX1_HUMAN
Immunogen Region	313-328
Immunogen Sequence	TFMEQTGALAGSEGTAYSFK MEDWAGVNRATFPATPAVNG LEKPALEADIKYTSASTLS AVGGFLPACAYPASNHGVY SAPGGGYLAPGPPWPPAQGP PLAPPGAGVAVHGGELAAAM TFKHPSREGSLPAPAARPT PSVAYTDCPSRPRPPRGSSP RTRARRERQADPGAQVCAA PAIGTGRIGGLAEEEEASAGP RGARPASPQAQCLWDPDPH FLYWSGFLGFSELGF
Specificity	A synthetic peptide corresponding to a sequence within amino acids 300-400 of human PAX1 (NP_006183.2).

ADDITIONAL INFORMATION

Note STRICTLY FOR FURTHER SCIENTIFIC RESEARCH USE ONLY (RUO). MUST NOT TO BE USED IN DIAGNOSTIC OR THERAPEUTIC APPLICATIONS.



Western blot analysis of lysates from wild type (WT) and 293T cells transfected with PAX1 using PAX1 Rabbit polyclonal antibody (STJ119605) at 1:400 dilution. Secondary antibody: HRP Goat Anti-Rabbit IgG (H+L) (STJS000856) at 1:10000 dilution. Lysates/proteins: 25µg per lane. Blocking buffer: 3% nonfat dry milk in TBST. Detection: ECL Basic Kit. Exposure time: 60s.