

## Anti-TRPM1 antibody (1460-1540) (STJ119601)

### GENERAL INFORMATION

Product Type	Primary antibodies
Applications	WB/ELISA
Host / Source	Rabbit
Reactivity	Human

### PRODUCT PROPERTIES

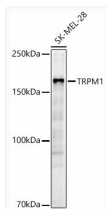
Clonality	Polyclonal
Concentration	Lot specific
Conjugation	Unconjugated
Purification	Affinity purification
Dilution Range	WB:1:500-1:1000 ELISA:Recommended starting concentration is 1 $\mu$ g/mL. Please optimize the concentration based on your specific assay requirements.
Formulation	PBS with 0.05% Proclin300, 50% Glycerol, pH 7.3.
Isotype	IgG
Molecular Weight	Protein Mw: 182kDa Observed Mw: 182kDa
Storage Instruction	Store at -20°C for up to 1 year from the date of receipt, and avoid repeat freeze-thaw cycles.

### TARGET INFORMATION

Gene ID	<a href="#">4308</a>
Gene Symbol	<a href="#">TRPM1</a>
UniProt ID	<a href="#">TRPM1_HUMAN</a>
Immunogen Region	1460-1540
Immunogen Sequence	SITDQQLTTEWQCQVQKTR SHSTDIPYIVSEAAVQAEHK EQFADMQDEHHVAAEIPRIP RLSLTITDRNGMENLLSVKP D
Specificity	Recombinant fusion protein containing a sequence corresponding to amino acids 1460-1540 of human TRPM1 (NP_002411.3).

### ADDITIONAL INFORMATION

Note STRICTLY FOR FURTHER SCIENTIFIC RESEARCH USE ONLY (RUO). MUST NOT TO BE USED IN DIAGNOSTIC OR THERAPEUTIC APPLICATIONS.



Western blot analysis of SK-MEL-28, using TRPM1 antibody (STJ119601) at 1:800 dilution. Secondary antibody: HRP Goat Anti-rabbit IgG (H+L) (STJS000856) at 1:10000 dilution. Lysates/proteins: 25  $\mu$ g per lane. Blocking buffer: 3% non-fat dry milk in TBST. Detection: ECL Basic Kit. Exposure time: 60s.