

## Anti-DCX antibody (265-365) (STJ119578)

### GENERAL INFORMATION

Product Type	Primary antibodies
Applications	WB/IF/ICC/ELISA
Host / Source	Rabbit
Reactivity	Human/Mouse/Rat

### PRODUCT PROPERTIES

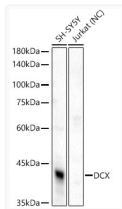
Clonality	Polyclonal
Concentration	Lot specific
Conjugation	Unconjugated
Purification	Affinity purification
Dilution Range	WB:1:500-1:1000 IF/CC:1:50-1:200 ELISA:Recommended starting concentration is 1 Mu g/mL. Please optimize the concentration based on your specific assay requirements.
Formulation	PBS with 0.05% Proclin300, 50% Glycerol, pH 7.3.
Isotype	IgG
Molecular Weight	Protein Mw: 41kDa Observed Mw: 41kDa
Storage Instruction	Store at -20°C for up to 1 year from the date of receipt, and avoid repeat freeze-thaw cycles.

### TARGET INFORMATION

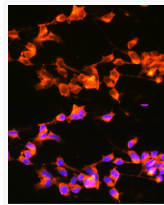
Gene ID	<a href="#">1641</a>
Gene Symbol	<a href="#">DCX</a>
UniProt ID	<a href="#">DCX_HUMAN</a>
Immunogen Region	265-365
Immunogen Sequence	SLDENECRVMKGNPSATAGP KASPTPQKTSAKSPGPMRRS KSPADSGNDQDANGTSSSQL STPKSKQSPISTPTSPGSLR KHKDLYLPLSLDDSDSLGDS M
Specificity	Recombinant fusion protein containing a sequence corresponding to amino acids 265-365 of human Doublecortin (NP_835365.1).

### ADDITIONAL INFORMATION

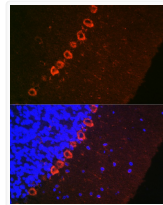
Note STRICTLY FOR FURTHER SCIENTIFIC RESEARCH USE ONLY (RUO). MUST NOT TO BE USED IN DIAGNOSTIC OR THERAPEUTIC APPLICATIONS.



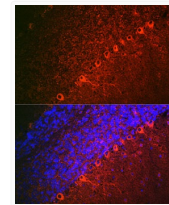
Western blot analysis of various lysates, using Doublecortin antibody (STJ119578) at 1:400 dilution. Secondary antibody: HRP Goat Anti-rabbit IgG (H+L) (STJS000856) at 1:10000 dilution. Lysates/proteins: 25 Mu g per lane. Blocking buffer: 3% non-fat dry milk in TBST. Detection: ECL Basic Kit. Negative control (NC) : JurkatExposure time: 10s.



Immunofluorescence analysis of SH-SY5Y cells using Doublecortin rabbit polyclonal antibody (STJ119578) at dilution of 1:100 (40x lens). Blue: DAPI for nuclear staining.



Immunofluorescence analysis of rat brain using Doublecortin rabbit polyclonal antibody (STJ119578) at dilution of 1:100 (40x lens). Blue: DAPI for nuclear staining.



Immunofluorescence analysis of mouse brain using Doublecortin rabbit polyclonal antibody (STJ119578) at dilution of 1:100 (40x lens). Blue: DAPI for nuclear staining.