

Anti-COL9A2 antibody (600-689) (STJ119576)

GENERAL INFORMATION

| | |
|---------------|--------------------|
| Product Type | Primary antibodies |
| Applications | WB/ELISA |
| Host / Source | Rabbit |
| Reactivity | Rat |

PRODUCT PROPERTIES

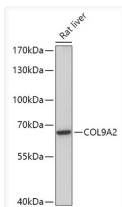
| | |
|---------------------|--|
| Clonality | Polyclonal |
| Concentration | Lot specific |
| Conjugation | Unconjugated |
| Purification | Affinity purification |
| Dilution Range | WB:1:500-1:2000 ELISA:Recommended starting concentration is 1 µg/mL. Please optimize the concentration based on your specific assay requirements. |
| Formulation | PBS with 0.01% Thimerosal, 50% Glycerol, pH 7.3. |
| Isotype | IgG |
| Molecular Weight | Protein Mw: 65kDa Observed Mw: 65kDa |
| Storage Instruction | Store at -20°C for up to 1 year from the date of receipt, and avoid repeat freeze-thaw cycles. |

TARGET INFORMATION

| | |
|--------------------|---|
| Gene ID | 1298 |
| Gene Symbol | COL9A2 |
| UniProt ID | CO9A2_HUMAN |
| Immunogen Region | 600-689 |
| Immunogen Sequence | RGEKGDPEVGRGHPGMPGP PGIPGLPGRPGQAINGKDGD RGSPGAPGEAGRPLPGPVG LPGFCEPAACLGASAYASAR LTEPGSIKGP |
| Specificity | A synthetic peptide corresponding to a sequence within amino acids 600-689 of human COL9A2 (NP_001843.1). |

ADDITIONAL INFORMATION

Note STRICTLY FOR FURTHER SCIENTIFIC RESEARCH USE ONLY (RUO). MUST NOT TO BE USED IN DIAGNOSTIC OR THERAPEUTIC APPLICATIONS.



Western blot analysis of lysates from Rat liver, using COL9A2 Rabbit polyclonal antibody (STJ119576) at 1:1000 dilution. Secondary antibody: HRP Goat Anti-Rabbit IgG (H+L) (STJS000856) at 1:10000 dilution. Lysates/proteins: 25 µg per lane. Blocking buffer: 3% nonfat dry milk in TBST. Detection: ECL Basic Kit. Exposure time: 5min.