

Anti-GALP antibody (25-116) (STJ119561)

GENERAL INFORMATION

Product Type	Primary antibodies
Applications	WB/ELISA
Host / Source	Rabbit
Reactivity	Human/Mouse/Rat

PRODUCT PROPERTIES

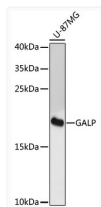
Clonality	Polyclonal
Concentration	Lot specific
Conjugation	Unconjugated
Purification	Affinity purification
Dilution Range	WB:1:500-1:2000 ELISA:Recommended starting concentration is 1 µg/mL. Please optimize the concentration based on your specific assay requirements.
Formulation	PBS with 0.01% Thimerosal, 50% Glycerol, pH 7.3.
Isotype	IgG
Molecular Weight	Protein Mw: 13kDa Observed Mw: 20kDa
Storage Instruction	Store at -20°C for up to 1 year from the date of receipt, and avoid repeat freeze-thaw cycles.

TARGET INFORMATION

Gene ID	85569
Gene Symbol	GALP
UniProt ID	GALP_HUMAN
Immunogen Region	25-116
Immunogen Sequence	APAHRGRGGWTLNSAGYLLG PVLHLPQMGDQDGKRETALE ILDLWKAIDGLPYSHPPQPS KRNVMETFAKPEIGDLGMLS MKIPKEEDVLKS
Specificity	Recombinant fusion protein containing a sequence corresponding to amino acids 25-116 of human GALP (NP_149097.1).

ADDITIONAL INFORMATION

Note STRICTLY FOR FURTHER SCIENTIFIC RESEARCH USE ONLY (RUO). MUST NOT TO BE USED IN DIAGNOSTIC OR THERAPEUTIC APPLICATIONS.



Western blot analysis of lysates from U-87MG cells, using GALP Rabbit polyclonal antibody (STJ119561) at 1:3000 dilution. Secondary antibody: HRP Goat Anti-Rabbit IgG (H+L) (STJS000856) at 1:10000 dilution. Lysates/proteins: 25 µg per lane. Blocking buffer: 3% nonfat dry milk in TBST. Detection: ECL Enhanced Kit. Exposure time: 90s.