

Anti-PIK3R2 antibody (1-85) (STJ119550)

GENERAL INFORMATION

Product Type	Primary antibodies
Applications	WB/IHC-P/IF/ICC/ELISA
Host / Source	Rabbit
Reactivity	Human/Mouse/Rat

PRODUCT PROPERTIES

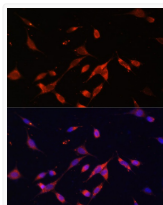
Clonality	Polyclonal
Concentration	Lot specific
Conjugation	Unconjugated
Purification	Affinity purification
Dilution Range	WB:1:500-1:1000 IHC-P:1:50-1:200 IF/CC:1:50-1:200 ELISA:Recommended starting concentration is 1 μ g/mL. Please optimize the concentration based on your specific assay requirements.
Formulation	PBS with 0.01% Thimerosal, 50% Glycerol, pH 7.3.
Isotype	IgG
Molecular Weight	Protein Mw: 82kDa Observed Mw: 85kDa
Storage Instruction	Store at -20°C for up to 1 year from the date of receipt, and avoid repeat freeze-thaw cycles.

TARGET INFORMATION

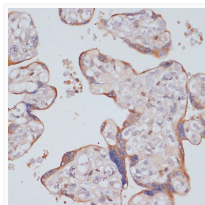
Gene ID	5296
Gene Symbol	PIK3R2
UniProt ID	P85B_HUMAN
Immunogen Region	1-85
Immunogen Sequence	MAGPEGFQYRALYPFRFRERPEDELELLPGDVLVVSRAALQALGVAEGGERCPQSVGWMPGLNERTRQRGDFPGTYVEFLGPVALAR
Specificity	Recombinant fusion protein containing a sequence corresponding to amino acids 1-85 of human PI3 Kinase p85 beta (NP_005018.1).

ADDITIONAL INFORMATION

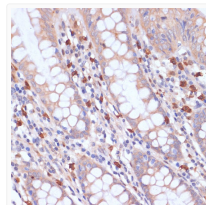
Note **STRICTLY FOR FURTHER SCIENTIFIC RESEARCH USE ONLY (RUO). MUST NOT TO BE USED IN DIAGNOSTIC OR THERAPEUTIC APPLICATIONS.**



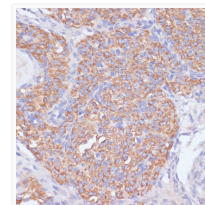
Immunofluorescence analysis of NIH/3T3 using PI3 Kinase p85 beta Rabbit polyclonal antibody (STJ119550) at dilution of 1:100. Blue: DAPI for nuclear staining.



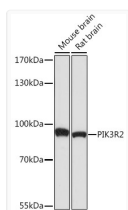
Immunohistochemistry analysis of PI3 Kinase p85 beta in paraffin-embedded human placenta using PI3 Kinase p85 beta Rabbit polyclonal antibody (STJ119550) at dilution of 1:200 (40x lens). Perform microwave antigen retrieval with 10 mM PBS buffer pH 7.2 before commencing with immunohistochemistry staining protocol.



Immunohistochemistry analysis of PI3 Kinase p85 beta in paraffin-embedded human colon using PI3 Kinase p85 beta Rabbit polyclonal antibody (STJ119550) at dilution of 1:200 (40x lens). Perform microwave antigen retrieval with 10 mM PBS buffer pH 7.2 before commencing with immunohistochemistry staining protocol.



Immunohistochemistry analysis of PI3 Kinase p85 beta in paraffin-embedded rat ovary using PI3 Kinase p85 beta Rabbit polyclonal antibody (STJ119550) at dilution of 1:200 (40x lens). Perform microwave antigen retrieval with 10 mM PBS buffer pH 7.2 before commencing with immunohistochemistry staining protocol.



Western blot analysis of various lysates using PI3 Kinase p85 beta Rabbit polyclonal antibody (STJ119550) at 1:1000 dilution. Secondary antibody: HRP Goat Anti-Rabbit IgG (H+L) (STJS000856) at 1:10000 dilution. Lysates/proteins: 25 μ g per lane. Blocking buffer: 3% nonfat dry milk in TBST. Detection: ECL Basic Kit. Exposure time: 90s.