

Anti-MYOG antibody (138-158) (STJ119547)

GENERAL INFORMATION

Product Type	Primary antibodies
Applications	WB/IF/ICC/ELISA
Host / Source	Rabbit
Reactivity	Human/Mouse/Rat

PRODUCT PROPERTIES

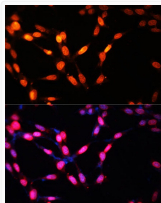
Clonality	Polyclonal
Concentration	Lot specific
Conjugation	Unconjugated
Purification	Affinity purification
Dilution Range	WB:1:500-1:1000 IF/CC:1:50-1:200 ELISA:Recommended starting concentration is 1 Mu g/mL. Please optimize the concentration based on your specific assay requirements.
Formulation	PBS with 0.09% Sodium Azide, 50% Glycerol, pH7.3.
Isotype	IgG
Molecular Weight	Protein Mw: 25kDa Observed Mw: 25kDa/40kDa
Storage Instruction	Store at -20°C for up to 1 year from the date of receipt, and avoid repeat freeze-thaw cycles.

TARGET INFORMATION

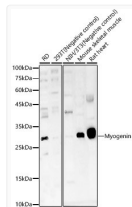
Gene ID	4656
Gene Symbol	MYOG
UniProt ID	MYOG_HUMAN
Immunogen Region	138-158
Immunogen Sequence	AFEALKRSTLLNPNQRLPKV EILRSAIQYIERLQALLSSL NQEERDLRYRGGGGPQPGVP SECSSHSASCSPWGSALF SANPGDHLLTADPTDAHNLH SLTSIVDSITVEDVSVAFPD ETMPN
Specificity	A synthetic peptide corresponding to a sequence within amino acids 100-200 of human Myogenin (NP_002470.2).

ADDITIONAL INFORMATION

Note STRICTLY FOR FURTHER SCIENTIFIC RESEARCH USE ONLY (RUO). MUST NOT TO BE USED IN DIAGNOSTIC OR THERAPEUTIC APPLICATIONS.



Immunofluorescence analysis of NIH/3T3 cells using Myogenin Rabbit polyclonal antibody (STJ119547) at dilution of 1:100. Blue: DAPI for nuclear staining.



Western blot analysis of various lysates, using Myogenin Rabbit polyclonal antibody (STJ119547) at 1:2000 dilution. Secondary antibody: HRP Goat Anti-Rabbit IgG (H+L) (STJS000856) at 1:10000 dilution. Lysates/proteins: 25 Mu g per lane. Blocking buffer: 3% nonfat dry milk in TBST. Detection: ECL Basic Kit. Exposure time: 90s.