

Anti-SIRT1 antibody (448-747) (STJ119437)

GENERAL INFORMATION

Product Type	Primary antibodies
Applications	WB/IF/ICC/ELISA
Host / Source	Rabbit
Reactivity	Human/Mouse/Rat

PRODUCT PROPERTIES

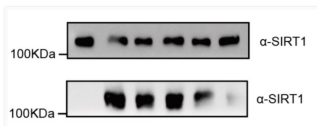
Clonality	Polyclonal
Concentration	Lot specific
Conjugation	Unconjugated
Purification	Affinity purification
Dilution Range	WB:1:500-1:2000 IF/CC:1:50-1:200 ELISA:Recommended starting concentration is 1 µg/mL. Please optimize the concentration based on your specific assay requirements.
Formulation	PBS with 0.09% Sodium Azide, 50% Glycerol, pH 7.3.
Isotype	IgG
Molecular Weight	Protein Mw: 82kDa Observed Mw: 120kDa
Storage Instruction	Store at -20°C for up to 1 year from the date of receipt, and avoid repeat freeze-thaw cycles.

TARGET INFORMATION

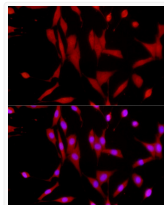
Gene ID	23411
Gene Symbol	SIRT1
UniProt ID	SIR1_HUMAN
Immunogen Region	448-747
Immunogen Sequence	VALIPSSIPHEVPQILINRE PLPHLHFDVELLGDCDVIIN ELCHRLGGGEYAKLCCNPVKL SEITEKPPRTQKELAYLSEL PPTPLHVSEDSSEPERTSPP DSSVIVTLDDQAAKSNDDLD VSESKGCMEEKPQEVQTSRN VESIAEQMENPDLKNVGSST GEKNERTSVAGTVRKCWPNR VAKEQISRRLDGNQYLFPP NRYIFHGAEVYSDSEDDVLS SSSCGSNSDSGTCQSPSLE
Specificity	Recombinant fusion protein containing a sequence corresponding to amino acids 448-747 of human SIRT1 (NP_036370.2).

ADDITIONAL INFORMATION

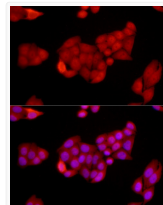
Note STRICTLY FOR FURTHER SCIENTIFIC RESEARCH USE ONLY (RUO). MUST NOT TO BE USED IN DIAGNOSTIC OR THERAPEUTIC APPLICATIONS.



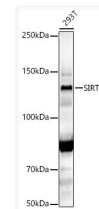
Western blot analysis of various lysates using SIRT1 Rabbit polyclonal antibody (STJ119437) at 1:1000 dilution. Secondary antibody: HRP Goat Anti-Rabbit IgG (H+L) (STJS000856) at 1:10000 dilution. Lysates/proteins: 25 µg per lane. Blocking buffer: 3% nonfat dry milk in TBST. Detection: ECL Basic Kit. Exposure time: 30s.



Immunofluorescence analysis of NIH/3T3 cells using SIRT1 Rabbit polyclonal antibody (STJ119437) at dilution of 1:200 (40x lens). Secondary antibody: Cy3 Goat Anti-Rabbit IgG (H+L) at 1:500 dilution. Blue: DAPI for nuclear staining.



Immunofluorescence analysis of HeLa cells using SIRT1 Rabbit polyclonal antibody (STJ119437) at dilution of 1:200 (40x lens). Secondary antibody: Cy3 Goat Anti-Rabbit IgG (H+L) at 1:500 dilution. Blue: DAPI for nuclear staining.



Western blot analysis of lysates from 293T cells, using SIRT1 Rabbit polyclonal antibody (STJ119437) at 1:2000 dilution. Secondary antibody: HRP Goat Anti-Rabbit IgG (H+L) (STJS000856) at 1:10000 dilution. Lysates/proteins: 25 µg per lane. Blocking buffer: 3% nonfat dry milk in TBST. Detection: ECL Basic Kit. Exposure time: 180s.