

## Anti-MAPK1/MAPK3 antibody (200-300) (STJ119426)

### GENERAL INFORMATION

Product Type	Primary antibodies
Applications	WB/IHC-P/ELISA
Host / Source	Rabbit
Reactivity	Human/Mouse/Rat

### PRODUCT PROPERTIES

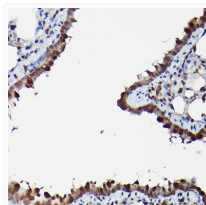
Clonality	Polyclonal
Concentration	Lot specific
Conjugation	Unconjugated
Purification	Affinity purification
Dilution Range	WB:1:500-1:2000 IHC-P:1:50-1:200 ELISA:Recommended starting concentration is 1 µg/mL. Please optimize the concentration based on your specific assay requirements.
Formulation	PBS with 0.01% Thimerosal, 50% Glycerol, pH 7.3.
Isotype	IgG
Molecular Weight	Protein Mw: 36kDa/41kDa/38kDa/40kDa/43kDa Observed Mw: 44kDa
Storage Instruction	Store at -20°C for up to 1 year from the date of receipt, and avoid repeat freeze-thaw cycles.

### TARGET INFORMATION

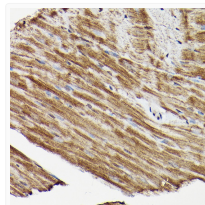
Gene ID	<a href="#">5595</a> <a href="#">5594</a>
Gene Symbol	<a href="#">MAPK3</a> <a href="#">MAPK1</a>
UniProt ID	<a href="#">MK03_HUMAN</a> <a href="#">MK01_HUMAN</a>
Immunogen Region	200-300
Immunogen Sequence	FLTEYVATRWYRAPEIMLNS KGYTKSIDIVSVCILAEML SNRPFPFGKHYLDQLNHILG ILGSPSQEDLNCCIINMKARN YLQSLPSKTKVAWAKLFPKS D/LNSKGYTKSIDIVSVCILAEMLSNRPFPFGKHYLDQL NHILGILGSPSQEDLNCCIIN LKARNYLLSLPHKNKVPWNR LFPNADSKALDLLDKMLTFN PHK
Specificity	A synthetic peptide corresponding to a sequence within amino acids 200-300 of human MAPK1/MAPK3ERK1/2 (P27361/P28482).

### ADDITIONAL INFORMATION

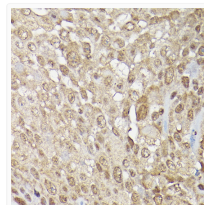
Note STRICTLY FOR FURTHER SCIENTIFIC RESEARCH USE ONLY (RUO). MUST NOT TO BE USED IN DIAGNOSTIC OR THERAPEUTIC APPLICATIONS.



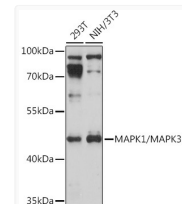
Immunohistochemistry analysis of MAPK1/MAPK3 in paraffin-embedded rat lung using MAPK1/MAPK3 Rabbit polyclonal antibody (STJ119426) at dilution of 1:200 (40x lens). Perform high pressure antigen retrieval with 10 mM citrate buffer pH 6. 0 before commencing with immunohistochemistry staining protocol.



Immunohistochemistry analysis of MAPK1/MAPK3 in paraffin-embedded mouse heart using MAPK1/MAPK3 Rabbit polyclonal antibody (STJ119426) at dilution of 1:200 (40x lens). Perform high pressure antigen retrieval with 10 mM citrate buffer pH 6. 0 before commencing with immunohistochemistry staining protocol.



Immunohistochemistry analysis of MAPK1/MAPK3 in paraffin-embedded human urothelial carcinoma using MAPK1/MAPK3 Rabbit polyclonal antibody (STJ119426) at dilution of 1:200 (40x lens). Perform high pressure antigen retrieval with 10 mM citrate buffer pH 6. 0 before commencing with immunohistochemistry staining protocol.



Western blot analysis of various lysates using MAPK1/MAPK3 Rabbit polyclonal antibody (STJ119426) at 1:1000 dilution. Secondary antibody: HRP Goat Anti-Rabbit IgG (H+L) (STJS000856) at 1:10000 dilution. Lysates/proteins: 25 µg per lane. Blocking buffer: 3% nonfat dry milk in TBST. Detection: ECL Basic Kit. Exposure time: 10s.