

Anti-SLC24A4 antibody (200-300) (STJ119363)

GENERAL INFORMATION

Product Type	Primary antibodies
Applications	WB/ELISA
Host / Source	Rabbit
Reactivity	Human/Mouse/Rat

PRODUCT PROPERTIES

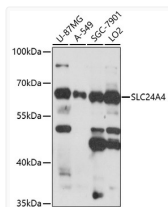
Clonality	Polyclonal
Concentration	Lot specific
Conjugation	Unconjugated
Purification	Affinity purification
Dilution Range	WB:1:500-1:2000 ELISA:Recommended starting concentration is 1 µg/mL. Please optimize the concentration based on your specific assay requirements.
Formulation	PBS with 0.01% Thimerosal, 50% Glycerol, pH 7.3.
Isotype	IgG
Molecular Weight	Protein Mw: 69kDa Observed Mw: 69kDa
Storage Instruction	Store at -20°C for up to 1 year from the date of receipt, and avoid repeat freeze-thaw cycles.

TARGET INFORMATION

Gene ID	123041
Gene Symbol	SLC24A4
UniProt ID	NCKX4_HUMAN
Immunogen Region	200-300
Immunogen Sequence	WWAVCRDSVYYTISVIVLIV FIYDEQIVWWEGLVLIILYV FYLIMKYNVVKMQAFFTVKQ KSIANGNPVNSELEAGNDFY DGSYDDPSVPLLQQVKEKPQ Y
Specificity	A synthetic peptide corresponding to a sequence within amino acids 200-300 of human SLC24A4 (NP_705932.2).

ADDITIONAL INFORMATION

Note STRICTLY FOR FURTHER SCIENTIFIC RESEARCH USE ONLY (RUO). MUST NOT TO BE USED IN DIAGNOSTIC OR THERAPEUTIC APPLICATIONS.



Western blot analysis of various lysates using SLC24A4 Rabbit polyclonal antibody (STJ119363) at 1:1000 dilution. Secondary antibody: HRP Goat Anti-Rabbit IgG (H+L) (STJS000856) at 1:10000 dilution. Lysates/proteins: 25 µg per lane. Blocking buffer: 3% nonfat dry milk in TBST. Detection: ECL Enhanced Kit. Exposure time: 90s.