

## Anti-ARL6IP4 antibody (313-402) (STJ119326)

### GENERAL INFORMATION

Product Type	Primary antibodies
Applications	IHC-P/ELISA
Host / Source	Rabbit
Reactivity	Human

### PRODUCT PROPERTIES

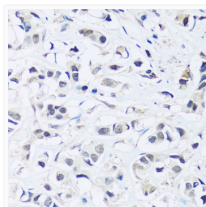
Clonality	Polyclonal
Concentration	Lot specific
Conjugation	Unconjugated
Purification	Affinity purification
Dilution Range	IHC-P:1:50-1:200 ELISA:Recommended starting concentration is 1 µg/mL. Please optimize the concentration based on your specific assay requirements.
Formulation	PBS with 0.01% Thimerosal, 50% Glycerol, pH 7.3.
Isotype	IgG
Molecular Weight	Protein Mw: 26kDa Observed Mw: Refer to figures
Storage Instruction	Store at -20°C for up to 1 year from the date of receipt, and avoid repeat freeze-thaw cycles.

### TARGET INFORMATION

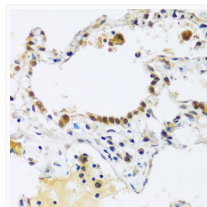
Gene ID	<a href="#">51329</a>
Gene Symbol	<a href="#">ARL6IP4</a>
UniProt ID	<a href="#">AR6P4_HUMAN</a>
Immunogen Region	313-402
Immunogen Sequence	SAGEEEDGPNLTDQKSRQI AMKPMTKEEWDARQSIIRKV VDPETGRTRLIKGDGEVLEE IVTKERHREINKQATRGDCL AFQMRAGLLP
Specificity	Recombinant fusion protein containing a sequence corresponding to amino acids 313-402 of human ARL6IP4 (NP_057722.3).

### ADDITIONAL INFORMATION

Note **STRICTLY FOR FURTHER SCIENTIFIC RESEARCH USE ONLY (RUO). MUST NOT TO BE USED IN DIAGNOSTIC OR THERAPEUTIC APPLICATIONS.**



Immunohistochemistry analysis of ARL6IP4 in paraffin-embedded human breast cancer using ARL6IP4 Rabbit polyclonal antibody (STJ119326) at dilution of 1:100 (40x lens). Perform microwave antigen retrieval with 10 mM PBS buffer pH 7.2 before commencing with immunohistochemistry staining protocol.



Immunohistochemistry analysis of ARL6IP4 in paraffin-embedded human lung using ARL6IP4 Rabbit polyclonal antibody (STJ119326) at dilution of 1:100 (40x lens). Perform microwave antigen retrieval with 10 mM PBS buffer pH 7.2 before commencing with immunohistochemistry staining protocol.