

Anti-ARL6IP1 antibody (1-100) (STJ119311)

GENERAL INFORMATION

Product Type	Primary antibodies
Applications	WB/IHC-P/ELISA
Host / Source	Rabbit
Reactivity	Human/Mouse/Rat

PRODUCT PROPERTIES

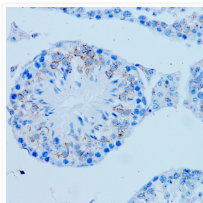
Clonality	Polyclonal
Concentration	Lot specific
Conjugation	Unconjugated
Purification	Affinity purification
Dilution Range	WB:1:500-1:2000 IHC-P:1:50-1:100 ELISA:Recommended starting concentration is 1 µg/mL. Please optimize the concentration based on your specific assay requirements.
Formulation	PBS with 0.01% Thimerosal, 50% Glycerol, pH 7.3.
Isotype	IgG
Molecular Weight	Protein Mw: 23kDa Observed Mw: 22kDa
Storage Instruction	Store at -20°C for up to 1 year from the date of receipt, and avoid repeat freeze-thaw cycles.

TARGET INFORMATION

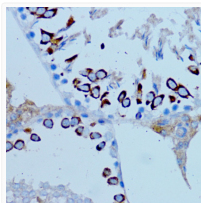
Gene ID	23204
Gene Symbol	ARL6IP1
UniProt ID	AR6P1_HUMAN
Immunogen Region	1-100
Immunogen Sequence	MAEGDNRSTNLLAAETASLE EQLQGWGEVMLMADKVLRWE RAWFPPAIMGVVSLVFLIYY YLDPVSLSGVSCFVMFLCLA DYLVPI LAPRIFGNSKNWTTTE
Specificity	A synthetic peptide corresponding to a sequence within amino acids 1-100 of human ARL6IP1 (NP_055976.1).

ADDITIONAL INFORMATION

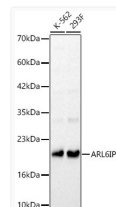
Note **STRICTLY FOR FURTHER SCIENTIFIC RESEARCH USE ONLY (RUO). MUST NOT TO BE USED IN DIAGNOSTIC OR THERAPEUTIC APPLICATIONS.**



Immunohistochemistry analysis of ARL6IP1 in paraffin-embedded Mouse testis tissue using ARL6IP1 Rabbit polyclonal antibody (STJ119311) at a dilution of 1:100 (40x lens). Microwave antigen retrieval performed with 0.01M PBS Buffer (pH 7.2) prior to immunohistochemistry staining.



Immunohistochemistry analysis of ARL6IP1 in paraffin-embedded Rat testis tissue using ARL6IP1 Rabbit polyclonal antibody (STJ119311) at a dilution of 1:100 (40x lens). Microwave antigen retrieval performed with 0.01M PBS Buffer (pH 7.2) prior to immunohistochemistry staining.



Western blot analysis of various lysates, using ARL6IP1 Rabbit polyclonal antibody (STJ119311) at 1:1000 dilution. Secondary antibody: HRP Goat Anti-Rabbit IgG (H+L) (STJS000856) at 1:10000 dilution. Lysates/proteins: 25µg per lane. Blocking buffer: 3% nonfat dry milk in TBST. Detection: ECL Basic Kit. Exposure time: 10s.