

Anti-PDCD10 antibody (1-212) (STJ119307)

GENERAL INFORMATION

Product Type	Primary antibodies
Applications	WB/IHC-P/IF/ICC/ELISA
Host / Source	Rabbit
Reactivity	Human/Mouse/Rat

PRODUCT PROPERTIES

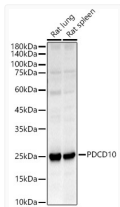
Clonality	Polyclonal
Concentration	Lot specific
Conjugation	Unconjugated
Purification	Affinity purification
Dilution Range	WB:1:500-1:1000 IHC-P:1:50-1:200 IF/CC:1:50-1:200 ELISA:Recommended starting concentration is 1 μ g/mL. Please optimize the concentration based on your specific assay requirements.
Formulation	PBS with 0.05% Proclin300, 50% Glycerol, pH 7.3.
Isotype	IgG
Molecular Weight	Protein Mw: 25kDa Observed Mw: 26kDa
Storage Instruction	Store at -20°C for up to 1 year from the date of receipt, and avoid repeat freeze-thaw cycles.

TARGET INFORMATION

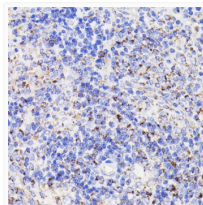
Gene ID	11235
Gene Symbol	PDCD10
UniProt ID	PDC10_HUMAN
Immunogen Region	1-212
Immunogen Sequence	MRMTMEEMKNEAETSMVSM PLYAVMYPVFNELERVNLSA AQTLLRAAFIKAEEKENPGLTQ DIIMKILEKKSVEVNFTESL LRMAADDVEEYMIERPEPEF QDLNEKARALKQILSKIPDE INDRVRFLLQTIKDIASAIKE LLDTVNNVFKKYQYQNRRL EHQKKEFVKYKSKSFSDTLKT YFKDGGKAINVFSANRLIHQ TNLILQTFKTV A
Specificity	Recombinant fusion protein containing a sequence corresponding to amino acids 1-212 of human PDCD10 (NP_009148.2).

ADDITIONAL INFORMATION

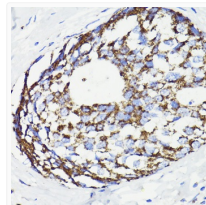
Note **STRICTLY FOR FURTHER SCIENTIFIC RESEARCH USE ONLY (RUO). MUST NOT TO BE USED IN DIAGNOSTIC OR THERAPEUTIC APPLICATIONS.**



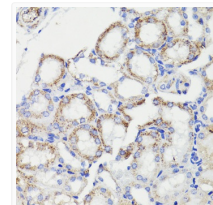
Western blot analysis of various lysates, using PDCD10 rabbit polyclonal antibody (STJ119307) at 1:500 dilution. Secondary antibody: HRP Goat Anti-rabbit IgG (H+L) (STJS000856) at 1:10000 dilution. Lysates/proteins: 25 μ g per lane. Blocking buffer: 3% non-fat dry milk in TBST. Detection: ECL Basic Kit. Exposure time: 45s.



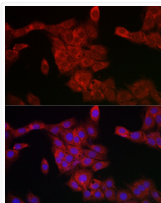
Immunohistochemistry analysis of paraffin-embedded rat spleen using PDCD10 antibody (STJ119307) at dilution of 1:100 (40x lens). Perform microwave antigen retrieval with 10 mM PBS buffer pH 7. 2 before commencing with immunohistochemistry staining protocol.



Immunohistochemistry analysis of paraffin-embedded human breast cancer using PDCD10 antibody (STJ119307) at dilution of 1:100 (40x lens). Perform microwave antigen retrieval with 10 mM PBS buffer pH 7. 2 before commencing with immunohistochemistry staining protocol.



Immunohistochemistry analysis of paraffin-embedded mouse kidney using PDCD10 antibody (STJ119307) at dilution of 1:100 (40x lens). Perform microwave antigen retrieval with 10 mM PBS buffer pH 7. 2 before commencing with immunohistochemistry staining protocol.



Immunofluorescence analysis of PC-12 cells using PDCD10 rabbit polyclonal antibody (STJ119307) at dilution of 1:200 (40x lens). Blue: DAPI for nuclear staining.