

## Anti-CAPN9 antibody (391-690) (STJ119303)

### GENERAL INFORMATION

Product Type	Primary antibodies
Applications	IHC-P/ELISA
Host / Source	Rabbit
Reactivity	Human

### PRODUCT PROPERTIES

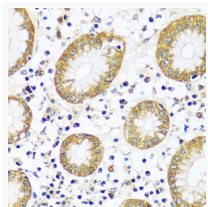
Clonality	Polyclonal
Concentration	Lot specific
Conjugation	Unconjugated
Purification	Affinity purification
Dilution Range	IHC-P:1:50-1:200 ELISA:Recommended starting concentration is 1 µg/mL. Please optimize the concentration based on your specific assay requirements.
Formulation	PBS with 0.01% Thimerosal, 50% Glycerol, pH 7.3.
Isotype	IgG
Molecular Weight	Protein Mw: 79kDa Observed Mw: Refer to figures
Storage Instruction	Store at -20°C for up to 1 year from the date of receipt, and avoid repeat freeze-thaw cycles.

### TARGET INFORMATION

Gene ID	<a href="#">10753</a>
Gene Symbol	<a href="#">CAPN9</a>
UniProt ID	<a href="#">CAN9_HUMAN</a>
Immunogen Region	391-690
Immunogen Sequence	QEECSFLVALMQKDRRLKR FGANVLTIGYAIYECPKDE HLNKDFFRYHASRARSKTFI NLREVSDRFKLPPGEYLIP STFEPHQEADFCLRFSEKK AITRDMDGNVDIDLPEPPKP TPPDQETEEERFRALFEQV AGEDMEVTAEELVYVLAFL QKKKDIKFKLSLISCKNII SLMDTSGNGKLEFDEFKVFVW DKLKQWINLFLRFADKSGT MSTYELRTALKAAGFQLSS
Specificity	Recombinant fusion protein containing a sequence corresponding to amino acids 391-690 of human CAPN9 (NP_006606.1).

### ADDITIONAL INFORMATION

Note	STRICTLY FOR FURTHER SCIENTIFIC RESEARCH USE ONLY (RUO). MUST NOT TO BE USED IN DIAGNOSTIC OR THERAPEUTIC APPLICATIONS.
------	---



Immunohistochemistry analysis of CAPN9 in paraffin-embedded human stomach using CAPN9 Rabbit polyclonal antibody (STJ119303) at dilution of 1:100 (40x lens). Perform microwave antigen retrieval with 10 mM PBS buffer pH 7.2 before commencing with immunohistochemistry staining protocol.