

Anti-KCNA1 antibody (426-495) (STJ119227)

GENERAL INFORMATION

Product Type	Primary antibodies
Applications	WB/IF/ICC/ELISA
Host / Source	Rabbit
Reactivity	Human/Mouse/Rat

PRODUCT PROPERTIES

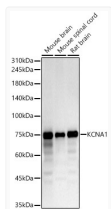
Clonality	Polyclonal
Concentration	Lot specific
Conjugation	Unconjugated
Purification	Affinity purification
Dilution Range	WB:1:500-1:1000 IF/CC:1:50-1:200 ELISA:Recommended starting concentration is 1 µg/mL. Please optimize the concentration based on your specific assay requirements.
Formulation	PBS with 0.05% Proclin300, 50% Glycerol, pH 7.3.
Isotype	IgG
Molecular Weight	Protein Mw: 56kDa Observed Mw: 60kDa/75kDa
Storage Instruction	Store at -20°C for up to 1 year from the date of receipt, and avoid repeat freeze-thaw cycles.

TARGET INFORMATION

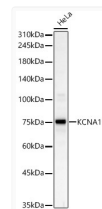
Gene ID	3736
Gene Symbol	KCNA1
UniProt ID	KCNA1_HUMAN
Immunogen Region	426-495
Immunogen Sequence	QLLHVSSPNLASDLSRRS SSTMSKSEYMEIEEDMNSI AHYRQVNI RTANCTTANQNC VNKSKLLTDV
Specificity	Recombinant fusion protein containing a sequence corresponding to amino acids 426-495 of human KCNA1 (NP_000208.2).

ADDITIONAL INFORMATION

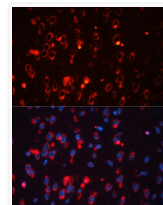
Note **STRICTLY FOR FURTHER SCIENTIFIC RESEARCH USE ONLY (RUO). MUST NOT TO BE USED IN DIAGNOSTIC OR THERAPEUTIC APPLICATIONS.**



Western blot analysis of various lysates, using KCNA1 rabbit polyclonal antibody (STJ119227) at 1:1000 dilution. Secondary antibody: HRP Goat Anti-rabbit IgG (H+L) (STJS000856) at 1:10000 dilution. Lysates/proteins: 25 µg per lane. Blocking buffer: 3% non-fat dry milk in TBST. Detection: ECL Basic Kit. Exposure time: 60s.



Western blot analysis of HeLa, using KCNA1 rabbit polyclonal antibody (STJ119227) at 1:1000 dilution. Secondary antibody: HRP Goat Anti-rabbit IgG (H+L) (STJS000856) at 1:10000 dilution. Lysates/proteins: 25 µg per lane. Blocking buffer: 3% non-fat dry milk in TBST. Detection: ECL Basic Kit. Exposure time: 30s.



Immunofluorescence analysis of mouse brain using KCNA1 antibody (STJ119227) at dilution of 1:100. Blue: DAPI for nuclear staining.