

## Anti-LAMP1 antibody (185-202) (STJ119222)

### GENERAL INFORMATION

Product Type	Primary antibodies
Applications	WB/IHC-P/IF/ICC/ELISA
Host / Source	Rabbit
Reactivity	Human/Mouse/Rat

### PRODUCT PROPERTIES

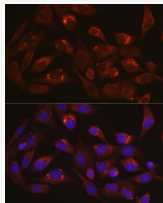
Clonality	Polyclonal
Concentration	Lot specific
Conjugation	Unconjugated
Purification	Affinity purification
Dilution Range	WB:1:500-1:1000 IHC-P:1:50-1:200 IF/ICC:1:50-1:200 ELISA:Recommended starting concentration is 1 Mu g/mL. Please optimize the concentration based on your specific assay requirements.
Formulation	PBS with 0.09% Sodium Azide, 50% Glycerol, pH7.3.
Isotype	IgG
Molecular Weight	Protein Mw: 45kDa Observed Mw: 42kDa/90-120kDa
Storage Instruction	Store at -20°C for up to 1 year from the date of receipt, and avoid repeat freeze-thaw cycles.

### TARGET INFORMATION

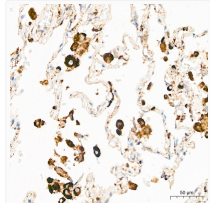
Gene ID	<a href="#">3916</a>
Gene Symbol	<a href="#">LAMP1</a>
UniProt ID	<a href="#">LAMP1_HUMAN</a>
Immunogen Region	185-202
Immunogen Sequence	DKKYRCVSGTQVHMNNVTVT LHDATIQAYLSNSSFSRGET RCEQDRPSPPTAPPAPPSPS PSPVPKSPSVDKYNVSGTNG TCLLASMGLQLNLTIERKDN TTVTRLLNINPNKTSASGSC GAHLVTLEHSEGTTVLLFQ FGMNASSRRFFLQGIQLNTI LPDARDPAFKAANGSLRALQ ATVGNISYKCAEEHVRVTKA FSVNIFKVVWVQAFKVEGGQF GSVEECLLDENSMLPIAV
Specificity	A synthetic peptide corresponding to a sequence within amino acids 150-250 of human LAMP1 (NP_005552.3).

### ADDITIONAL INFORMATION

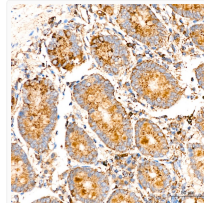
Note STRICTLY FOR FURTHER SCIENTIFIC RESEARCH USE ONLY (RUO). MUST NOT TO BE USED IN DIAGNOSTIC OR THERAPEUTIC APPLICATIONS.



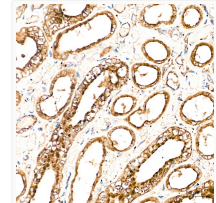
Immunofluorescence analysis of BALA-3T3 cells using LAMP1 Rabbit polyclonal antibody (STJ119222) at dilution of 1:100 (40x lens). Secondary antibody: Cy3 Goat Anti-Rabbit IgG (H+L) at 1:500 dilution. Blue: DAPI for nuclear staining.



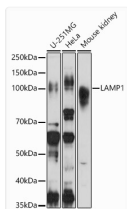
Immunohistochemistry analysis of paraffin-embedded Human lung tissue using LAMP1 Rabbit polyclonal antibody (STJ119222) at a dilution of 1:100 (40x lens). High pressure antigen retrieval performed with 0. 01M Citrate Buffer (pH 6. 0) prior to immunohistochemistry staining.



Immunohistochemistry analysis of paraffin-embedded Human colon tissue using LAMP1 Rabbit polyclonal antibody (STJ119222) at a dilution of 1:100 (40x lens). High pressure antigen retrieval performed with 0. 01M Citrate Buffer (pH 6. 0) prior to immunohistochemistry staining.



Immunohistochemistry analysis of paraffin-embedded Human kidney tissue using LAMP1 Rabbit polyclonal antibody (STJ119222) at a dilution of 1:100 (40x lens). High pressure antigen retrieval performed with 0. 01M Citrate Buffer (pH 6. 0) prior to immunohistochemistry staining.



Western blot analysis of various lysates using LAMP1 Rabbit polyclonal antibody (STJ119222) at 1:1000 dilution. Secondary antibody: HRP Goat Anti-Rabbit IgG (H+L) (STJS000856) at 1:10000 dilution. Lysates/proteins: 25 Mu g per lane. Blocking buffer: 3% nonfat dry milk in TBST. Detection: ECL Basic Kit. Exposure time: 180s.