

Anti-NSDHL antibody (1-240) (STJ119221)

GENERAL INFORMATION

Product Type	Primary antibodies
Applications	WB/IHC-P/IF/ICC/ELISA
Host / Source	Rabbit
Reactivity	Human/Mouse/Rat

PRODUCT PROPERTIES

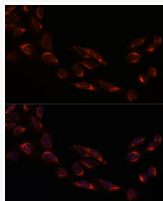
Clonality	Polyclonal
Concentration	Lot specific
Conjugation	Unconjugated
Purification	Affinity purification
Dilution Range	WB:1:500-1:1000 IHC-P:1:50-1:200 IF/ICC:1:50-1:200 ELISA:Recommended starting concentration is 1 Mu g/mL. Please optimize the concentration based on your specific assay requirements.
Formulation	PBS with 0.01% Thimerosal, 50% Glycerol, pH 7.3.
Isotype	IgG
Molecular Weight	Protein Mw: 42kDa Observed Mw: 40kDa
Storage Instruction	Store at -20°C for up to 1 year from the date of receipt, and avoid repeat freeze-thaw cycles.

TARGET INFORMATION

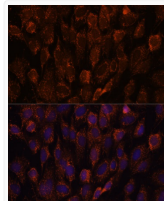
Gene ID	50814
Gene Symbol	NSDHL
UniProt ID	NSDHL_HUMAN
Immunogen Region	1-240
Immunogen Sequence	MEPAVSEPMRDQVARTHLTE DTPKVNADIEKVNQNQAKRC TVIGGSGFLGQHMVEQLLAR GYAVNVFDIQGGFDNPQVRF FLGDLCSRQDLYPALKGVNT VFHCASPPSSNNKELFYRV NYIGTKNVIETCKEAGVQKL ILTSSASVIFEGVDIKNGTE DLPYAMKPIDYYTETKILQE RAVLGANDPEKNFLTTAIRP HGIFGPRDPQLVPILIEAAR NGKMKFVIGNGKNLVDFTF
Specificity	Recombinant fusion protein containing a sequence corresponding to amino acids 1-240 of human NSDHL (NP_057006.1).

ADDITIONAL INFORMATION

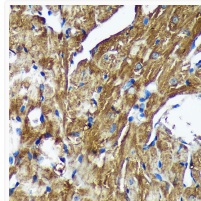
Note STRICTLY FOR FURTHER SCIENTIFIC RESEARCH USE ONLY (RUO). MUST NOT TO BE USED IN DIAGNOSTIC OR THERAPEUTIC APPLICATIONS.



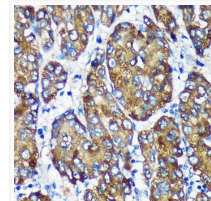
Immunofluorescence analysis of U-2 OS cells using [KO Validated] NSDHL Rabbit polyclonal antibody (STJ119221) at dilution of 1:100. Secondary antibody: Cy3 Goat Anti-Rabbit IgG (H+L) at 1:500 dilution. Blue: DAPI for nuclear staining.



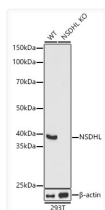
Immunofluorescence analysis of C6 cells using [KO Validated] NSDHL Rabbit polyclonal antibody (STJ119221) at dilution of 1:100. Secondary antibody: Cy3 Goat Anti-Rabbit IgG (H+L) at 1:500 dilution. Blue: DAPI for nuclear staining.



Immunohistochemistry analysis of NSDHL in paraffin-embedded Mouse heart using [KO Validated] NSDHL Rabbit polyclonal antibody (STJ119221) at dilution of 1:100 (40x lens). Perform microwave antigen retrieval with 10 mM PBS buffer pH 7.2 before commencing with immunohistochemistry staining protocol.



Immunohistochemistry analysis of NSDHL in paraffin-embedded Human liver cancer using [KO Validated] NSDHL Rabbit polyclonal antibody (STJ119221) at dilution of 1:100 (40x lens). Perform microwave antigen retrieval with 10 mM PBS buffer pH 7.2 before commencing with immunohistochemistry staining protocol.



Western blot analysis of lysates from wild type (WT) and NSDHL knockout (KO) 293T (KO) cells, using [KO Validated] NSDHL Rabbit polyclonal antibody (STJ119221) at 1:1000 dilution. Secondary antibody: HRP Goat Anti-Rabbit IgG (H+L) (STJS000856) at 1:10000 dilution. Lysates/proteins: 25 Mu g per lane. Blocking buffer: 3% nonfat dry milk in TBST. Detection: ECL Basic Kit. Exposure time: 1s.