

Anti-ETS2 antibody (300-400) (STJ119199)

GENERAL INFORMATION

Product Type	Primary antibodies
Applications	WB/ELISA
Host / Source	Rabbit
Reactivity	Mouse/Rat

PRODUCT PROPERTIES

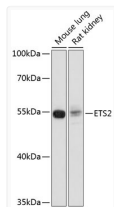
Clonality	Polyclonal
Concentration	Lot specific
Conjugation	Unconjugated
Purification	Affinity purification
Dilution Range	WB:1:500-1:2000 ELISA:Recommended starting concentration is 1 Mu g/mL. Please optimize the concentration based on your specific assay requirements.
Formulation	PBS with 0.01% Thimerosal, 50% Glycerol, pH 7.3.
Isotype	IgG
Molecular Weight	Protein Mw: 53kDa Observed Mw: Refer to figures
Storage Instruction	Store at-20°C for up to 1 year from the date of receipt, and avoid repeat freeze-thaw cycles.

TARGET INFORMATION

Gene ID	2114
Gene Symbol	ETS2
UniProt ID	ETS2_HUMAN
Immunogen Region	300-400
Immunogen Sequence	SSLLDVQRVPSFESFEDDCS QSLCLNKPTMSFKDYIQERS DPVEQGKPVIPAAVLAGFTG SGPIQLWQFLLELLSDKSCQ SFISWTGDGWEFKLADPDEV A
Specificity	A synthetic peptide corresponding to a sequence within amino acids 300-400 of human ETS2 (NP_005230.1).

ADDITIONAL INFORMATION

Note STRICTLY FOR FURTHER SCIENTIFIC RESEARCH USE ONLY (RUO). MUST NOT TO BE USED IN DIAGNOSTIC OR THERAPEUTIC APPLICATIONS.



Western blot analysis of various lysates using ETS2 Rabbit polyclonal antibody (STJ119199) at 1:1000 dilution. Secondary antibody: HRP Goat Anti-Rabbit IgG (H+L) (STJS000856) at 1:10000 dilution. Lysates/proteins: 25 Mu g per lane. Blocking buffer: 3% nonfat dry milk in TBST. Detection: ECL Basic Kit. Exposure time: 3min.