

## Anti-ABCA2 antibody (140-350) (STJ119146)

### GENERAL INFORMATION

|               |                    |
|---------------|--------------------|
| Product Type  | Primary antibodies |
| Applications  | WB/IF/ICC/ELISA    |
| Host / Source | Rabbit             |
| Reactivity    | Human/Mouse/Rat    |

### PRODUCT PROPERTIES

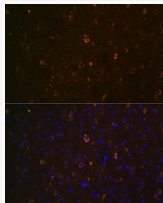
|                     |   |
|---------------------|---|
| Clonality           | Polyclonal  |
| Concentration       | Lot specific  |
| Conjugation         | Unconjugated  |
| Purification        | Affinity purification   |
| Dilution Range      | WB:1:500-1:1000<br>IF/CC:1:50-1:200<br>ELISA:Recommended starting concentration is 1 $\mu$ g/mL. Please optimize the concentration based on your specific assay requirements. |
| Formulation         | PBS with 0.01% Thimerosal, 50% Glycerol, pH 7.3.  |
| Isotype             | IgG   |
| Molecular Weight    | Protein Mw: 270kDa<br>Observed Mw: 270kDa   |
| Storage Instruction | Store at -20°C for up to 1 year from the date of receipt, and avoid repeat freeze-thaw cycles.  |

### TARGET INFORMATION

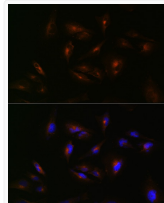
|                    |  |
|--------------------|--|
| Gene ID            | <a href="#">20</a>   |
| Gene Symbol        | <a href="#">ABCA2</a>  |
| UniProt ID         | <a href="#">ABCA2_HUMAN</a>  |
| Immunogen Region   | 140-350  |
| Immunogen Sequence | SHLDRSTVSSFSLDSVARNP QELWRFLTQNLSPNSTAQA LLAARVDPPEVYHLLFGPSS<br>ALDSQSGLHKGQEPWSRLGG NPLFRMEELLAPALLEQLT CTPGSGELGRILTPESQKG<br>ALQGYRDAVCSGQAAARARR FSGLSAELRNQLDVAKVSQQ LGLDAPNGSDSSPQAPPPRR<br>LQALLGDLLDAQKVLQDV DV LSALALLLPQG |
| Specificity        | Recombinant fusion protein containing a sequence corresponding to amino acids 140-350 of human ABCA2 (NP_001597.2).  |

### ADDITIONAL INFORMATION

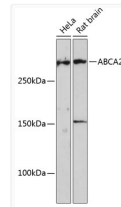
Note **STRICTLY FOR FURTHER SCIENTIFIC RESEARCH USE ONLY (RUO). MUST NOT TO BE USED IN DIAGNOSTIC OR THERAPEUTIC APPLICATIONS.**



Immunofluorescence analysis of paraffin-embedded mouse brain using ABCA2 Rabbit polyclonal antibody (STJ119146) at dilution of 1:100 (40x lens). Secondary antibody: Cy3 Goat Anti-Rabbit IgG (H+L) at 1:500 dilution. Blue: DAPI for nuclear staining.



Immunofluorescence analysis of U-251 MG cells using ABCA2 Rabbit polyclonal antibody (STJ119146) at dilution of 1:100 (40x lens). Secondary antibody: Cy3 Goat Anti-Rabbit IgG (H+L) at 1:500 dilution. Blue: DAPI for nuclear staining.



Western blot analysis of various lysates using ABCA2 Rabbit polyclonal antibody (STJ119146) at 1:1000 dilution. Secondary antibody: HRP Goat Anti-Rabbit IgG (H+L) (STJS000856) at 1:10000 dilution. Lysates/proteins: 25  $\mu$ g per lane. Blocking buffer: 3% nonfat dry milk in TBST. Detection: ECL Enhanced Kit. Exposure time: 3min.