

## Anti-TFAP4 antibody (200-338) (STJ119138)

### GENERAL INFORMATION

Product Type	Primary antibodies
Applications	WB/IF/ICC/ELISA
Host / Source	Rabbit
Reactivity	Human/Rat

### PRODUCT PROPERTIES

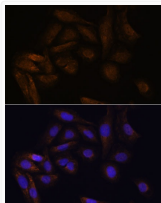
Clonality	Polyclonal
Concentration	Lot specific
Conjugation	Unconjugated
Purification	Affinity purification
Dilution Range	WB:1:200-1:2000 IF/CC:1:50-1:200 ELISA:Recommended starting concentration is 1 Mu g/mL. Please optimize the concentration based on your specific assay requirements.
Formulation	PBS with 0.01% Thimerosal, 50% Glycerol, pH 7.3.
Isotype	IgG
Molecular Weight	Protein Mw: 39kDa Observed Mw: 42kDa
Storage Instruction	Store at -20°C for up to 1 year from the date of receipt, and avoid repeat freeze-thaw cycles.

### TARGET INFORMATION

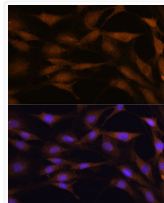
Gene ID	<a href="#">7023</a>
Gene Symbol	<a href="#">TFAP4</a>
UniProt ID	<a href="#">TFAP4_HUMAN</a>
Immunogen Region	200-338
Immunogen Sequence	QEEQVRLHQQEKLEREQQQL RTQLLPPAPTHHPTVIVPA PPPPSHHINVVMTMGPSVI NSVSTSRQNLDTIVQAIQHI EGTQEKQELEEEQRRRAVIVK PVRSCPEAPTSDTASDSEAS DSDAMDQSREEPSGDGELP
Specificity	A synthetic peptide corresponding to a sequence within amino acids 200-338 of human TFAP4 (NP_003214.1).

### ADDITIONAL INFORMATION

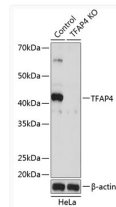
Note STRICTLY FOR FURTHER SCIENTIFIC RESEARCH USE ONLY (RUO). MUST NOT TO BE USED IN DIAGNOSTIC OR THERAPEUTIC APPLICATIONS.



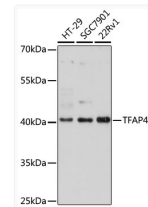
Immunofluorescence analysis of U-2 OS cells using [KO Validated] TFAP4 Rabbit polyclonal antibody (STJ119138) at dilution of 1:100. Secondary antibody: Cy3 Goat Anti-Rabbit IgG (H+L) at 1:500 dilution. Blue: DAPI for nuclear staining.



Immunofluorescence analysis of C6 cells using [KO Validated] TFAP4 Rabbit polyclonal antibody (STJ119138) at dilution of 1:100. Secondary antibody: Cy3 Goat Anti-Rabbit IgG (H+L) at 1:500 dilution. Blue: DAPI for nuclear staining.



Western blot analysis of lysates from wild type (WT) and TFAP4 knockout (KO) HeLa cells, using [KO Validated] TFAP4 Rabbit polyclonal antibody (STJ119138) at 1:500 dilution. Secondary antibody: HRP Goat Anti-Rabbit IgG (H+L) (STJS000856) at 1:10000 dilution. Lysates/proteins: 25 Mu g per lane. Blocking buffer: 3% nonfat dry milk in TBST. Detection: ECL Basic Kit. Exposure time: 60S.



Western blot analysis of various lysates using [KO Validated] TFAP4 Rabbit polyclonal antibody (STJ119138) at 1:1000 dilution. Secondary antibody: HRP Goat Anti-Rabbit IgG (H+L) (STJS000856) at 1:10000 dilution. Lysates/proteins: 25 Mu g per lane. Blocking buffer: 3% nonfat dry milk in TBST. Detection: ECL Basic Kit. Exposure time: 3min.