

## Anti-AMOTL2 antibody (638-837) (STJ119134)

### GENERAL INFORMATION

Product Type	Primary antibodies
Applications	WB/IHC-P/IF/ICC/ELISA
Host / Source	Rabbit
Reactivity	Human/Mouse

### PRODUCT PROPERTIES

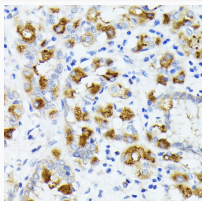
Clonality	Polyclonal
Concentration	Lot specific
Conjugation	Unconjugated
Purification	Affinity purification
Dilution Range	WB:1:500-1:1000 IHC-P:1:50-1:200 IF/CC:1:50-1:100 ELISA:Recommended starting concentration is 1 $\mu$ g/mL. Please optimize the concentration based on your specific assay requirements.
Formulation	PBS with 0.05% Proclin300, 50% Glycerol, pH 7.3.
Isotype	IgG
Molecular Weight	Protein Mw: 86kDa Observed Mw: 102kDa
Storage Instruction	Store at -20°C for up to 1 year from the date of receipt, and avoid repeat freeze-thaw cycles.

### TARGET INFORMATION

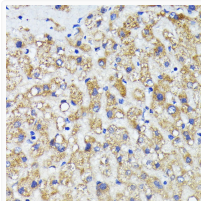
Gene ID	<a href="#">51421</a>
Gene Symbol	<a href="#">AMOTL2</a>
UniProt ID	<a href="#">AMOL2_HUMAN</a>
Immunogen Region	638-837
Immunogen Sequence	RQFAMDAAATAAAQRDTTLI RHSPQPSFSSSFNEGLLTGG HRHQEMESRLKVLHAQILEK DAVIKVLQQRSRDPGKAIQ GSLRPAKSVPSVFAAAAAGT QGWQGLSSSERQTADAPARL TTDRAPTEEPVVTAPPAAHA KHGSRDGTQTEGPPDSTST CLPPEPDSLLGCSSSQRAAS LDSVATSRVQDLSDMVEILI
Specificity	Recombinant fusion protein containing a sequence corresponding to amino acids 638-837 of human AMOTL2 (NP_001265612.1).

### ADDITIONAL INFORMATION

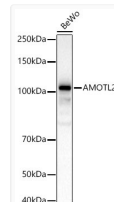
Note **STRICTLY FOR FURTHER SCIENTIFIC RESEARCH USE ONLY (RUO). MUST NOT TO BE USED IN DIAGNOSTIC OR THERAPEUTIC APPLICATIONS.**



Immunohistochemistry analysis of AMOTL2 in paraffin-embedded human stomach using AMOTL2 Rabbit polyclonal antibody (STJ119134) at dilution of 1:200 (40x lens). Perform microwave antigen retrieval with 10 mM PBS buffer pH 7.2 before commencing with immunohistochemistry staining protocol.



Immunohistochemistry analysis of AMOTL2 in paraffin-embedded human liver cancer using AMOTL2 Rabbit polyclonal antibody (STJ119134) at dilution of 1:200 (40x lens). Perform microwave antigen retrieval with 10 mM PBS buffer pH 7.2 before commencing with immunohistochemistry staining protocol.



Western blot analysis of lysates from BeWo cells using AMOTL2 Rabbit polyclonal antibody (STJ119134) at 1:600 dilution. Secondary antibody:HRP Goat Anti-Rabbit IgG (H+L) (STJS000856) at 1:10000 dilution. Lysates/proteins: 25  $\mu$ g per lane. Blocking buffer: 3% nonfat dry milk in TBST. Detection:ECL Basic Kit. Exposure time:60s.