

Anti-CDKL3 antibody (1-120) (STJ119103)

GENERAL INFORMATION

Product Type	Primary antibodies
Applications	WB/IHC-P/ELISA
Host / Source	Rabbit
Reactivity	Human/Mouse/Rat

PRODUCT PROPERTIES

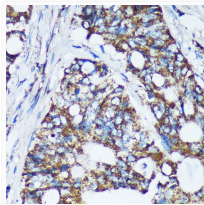
Clonality	Polyclonal
Concentration	Lot specific
Conjugation	Unconjugated
Purification	Affinity purification
Dilution Range	WB:1:500-1:1000 IHC-P:1:50-1:200 ELISA:Recommended starting concentration is 1 μ g/mL. Please optimize the concentration based on your specific assay requirements.
Formulation	PBS with 0.01% Thimerosal, 50% Glycerol, pH 7.3.
Isotype	IgG
Molecular Weight	Protein Mw: 68kDa Observed Mw: 52kDa/72kDa
Storage Instruction	Store at -20°C for up to 1 year from the date of receipt, and avoid repeat freeze-thaw cycles.

TARGET INFORMATION

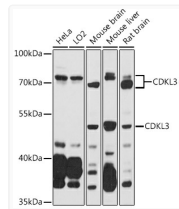
Gene ID	51265
Gene Symbol	CDKL3
UniProt ID	CDKL3_HUMAN
Immunogen Region	1-120
Immunogen Sequence	MEMYETLGKVGEGSYGTVMK CKHKNTGQIVAIKIFYERPE QSVNKIAMREIKFLKQFHHE NLVNLIEVFRQKKKIHLVFE FIDHTVLDELQHYCHGLESK RLRKYLQILRAIDYLSNN
Specificity	Recombinant fusion protein containing a sequence corresponding to amino acids 1-120 of human CDKL3 (NP_001107047).

ADDITIONAL INFORMATION

Note **STRICTLY FOR FURTHER SCIENTIFIC RESEARCH USE ONLY (RUO). MUST NOT TO BE USED IN DIAGNOSTIC OR THERAPEUTIC APPLICATIONS.**



Immunohistochemistry analysis of CDKL3 in paraffin-embedded Human colon carcinoma using CDKL3 Rabbit polyclonal antibody (STJ119103) at dilution of 1:100 (40x lens). Perform microwave antigen retrieval with 10 mM PBS buffer pH 7.2 before commencing with immunohistochemistry staining protocol.



Western blot analysis of various lysates using CDKL3 Rabbit polyclonal antibody (STJ119103) at 1:1000 dilution. Secondary antibody: HRP Goat Anti-Rabbit IgG (H+L) (STJS000856) at 1:10000 dilution. Lysates/proteins: 25 μ g per lane. Blocking buffer: 3% nonfat dry milk in TBST. Detection: ECL Basic Kit. Exposure time: 30s.