

Anti-MAPK1/MAPK3 antibody (200-300) (STJ119100)

GENERAL INFORMATION

Product Type	Primary antibodies
Applications	WB/IHC-P/IF/ICC/ELISA
Host / Source	Rabbit
Reactivity	Human/Mouse/Rat

PRODUCT PROPERTIES

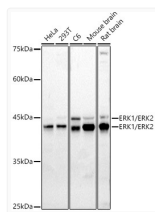
Clonality	Polyclonal
Concentration	Lot specific
Conjugation	Unconjugated
Purification	Affinity purification
Dilution Range	WB:1:500-1:1000 IHC-P:1:50-1:200 IF/CC:1:50-1:200 ELISA:Recommended starting concentration is 1 μ g/mL. Please optimize the concentration based on your specific assay requirements.
Formulation	PBS with 0.05% Proclin300, 50% Glycerol, pH 7.3.
Isotype	IgG
Molecular Weight	Protein Mw: 36kDa/41kDa/38kDa/40kDa/43kDa Observed Mw: 42kDa/44kDa
Storage Instruction	Store at -20°C for up to 1 year from the date of receipt, and avoid repeat freeze-thaw cycles.

TARGET INFORMATION

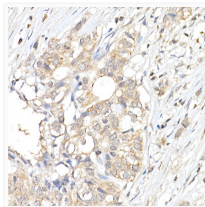
Gene ID	5594 5595
Gene Symbol	MAPK1 MAPK3
UniProt ID	MK01_HUMAN MK03_HUMAN
Immunogen Region	200-300
Immunogen Sequence	LNSKGYTKSIDIVSVCILA EMLSNRPIFPKGHYLDQLNH ILGILGSPSQEDLNCIINLK ARNYLLSLPHKNKVPWNRLF PNADSKALDLLDKMLTFNPH K
Specificity	A synthetic peptide corresponding to a sequence within amino acids 200-300 of human ERK1/ERK2 (NP_620407.1/NP_002737.2).

ADDITIONAL INFORMATION

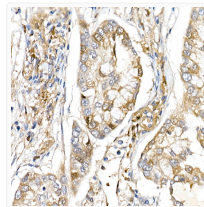
Note STRICTLY FOR FURTHER SCIENTIFIC RESEARCH USE ONLY (RUO). MUST NOT TO BE USED IN DIAGNOSTIC OR THERAPEUTIC APPLICATIONS.



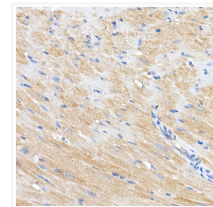
Western blot analysis of extracts of various cell lines, using ERK1/ERK2 antibody (STJ119100) at 1:1000 dilution. Secondary antibody: HRP Goat Anti-rabbit IgG (H+L) (STJS000856) at 1:10000 dilution. Lysates/proteins: 25 μ g per lane. Blocking buffer: 3% non-fat dry milk in TBST. Detection: ECL Basic Kit. Exposure time: 90s.



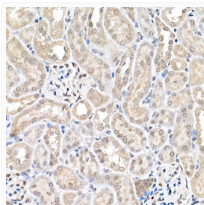
Immunohistochemistry analysis of paraffin-embedded human breast cancer using ERK1/ERK2 rabbit polyclonal antibody (STJ119100) at dilution of 1:50 (40x lens). Perform high pressure antigen retrieval with 10 mM citrate buffer pH 6.0 before commencing with immunohistochemistry staining protocol.



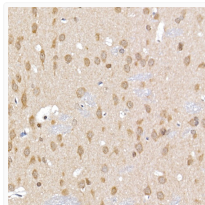
Immunohistochemistry analysis of paraffin-embedded human lung cancer using ERK1/ERK2 rabbit polyclonal antibody (STJ119100) at dilution of 1:50 (40x lens). Perform high pressure antigen retrieval with 10 mM citrate buffer pH 6.0 before commencing with immunohistochemistry staining protocol.



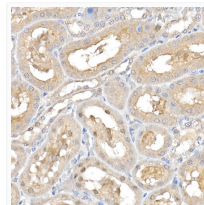
Immunohistochemistry analysis of paraffin-embedded mouse heart using ERK1/ERK2 rabbit polyclonal antibody (STJ119100) at dilution of 1:50 (40x lens). Perform high pressure antigen retrieval with 10 mM citrate buffer pH 6.0 before commencing with immunohistochemistry staining protocol.



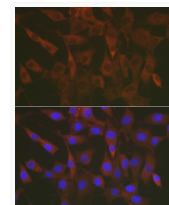
Immunohistochemistry analysis of paraffin-embedded mouse kidney using ERK1/ERK2 rabbit polyclonal antibody (STJ119100) at dilution of 1:50 (40x lens). Perform high pressure antigen retrieval with 10 mM citrate buffer pH 6.0 before commencing with immunohistochemistry staining protocol.



Immunohistochemistry analysis of paraffin-embedded rat brain using ERK1/ERK2 rabbit polyclonal antibody (STJ119100) at dilution of 1:50 (40x lens). Perform high pressure antigen retrieval with 10 mM citrate buffer pH 6.0 before commencing with immunohistochemistry staining protocol.



Immunohistochemistry analysis of paraffin-embedded rat kidney using ERK1/ERK2 rabbit polyclonal antibody (STJ119100) at dilution of 1:50 (40x lens). Perform high pressure antigen retrieval with 10 mM citrate buffer pH 6.0 before commencing with immunohistochemistry staining protocol.



Immunofluorescence analysis of NIH/3T3 cells using ERK1/ERK2 rabbit polyclonal antibody (STJ119100) at dilution of 1:50 (40x lens). Blue: DAPI for nuclear staining.