

Anti-PYCARD antibody (1-91) (STJ119089)

GENERAL INFORMATION

Product Type	Primary antibodies
Applications	WB/IHC-P/IF/ICC/IP/ELISA
Host / Source	Rabbit
Reactivity	Human/Mouse/Rat

PRODUCT PROPERTIES

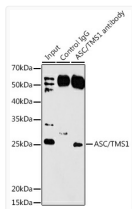
Clonality	Polyclonal
Concentration	Lot specific
Conjugation	Unconjugated
Purification	Affinity purification
Dilution Range	WB:1:500-1:2000 IHC-P:1:50-1:200 IF/CC:1:50-1:200 IP:0.5 Mu g-4 Mu g antibody for 400 Mu g-600 Mu g extracts of whole cells ELISA:Recommended starting concentration is 1 Mu g/mL. Please optimize the concentration based on your specif
Formulation	PBS with 0.09% Sodium Azide, 50% Glycerol, pH7.3.
Isotype	IgG
Molecular Weight	Protein Mw: 22kDa Observed Mw: 19-25kDa
Storage Instruction	Store at-20°C for up to 1 year from the date of receipt, and avoid repeat freeze-thaw cycles.

TARGET INFORMATION

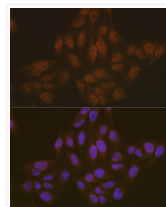
Gene ID	29108
Gene Symbol	PYCARD
UniProt ID	ASC_HUMAN
Immunogen Region	1-91
Immunogen Sequence	MGRARDAILDALENLTAEEL KFKFLKLLSVPLREGYGRIP RGALLSMDALDLTDKLVSFY LETYGAELTANVLRDMGLQE MAGQLQAATHQ
Specificity	Recombinant fusion protein containing a sequence corresponding to amino acids 1-91 of human ASC/TMS1 (NP_037390.2).

ADDITIONAL INFORMATION

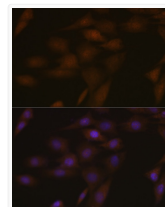
Note STRICTLY FOR FURTHER SCIENTIFIC RESEARCH USE ONLY (RUO). MUST NOT TO BE USED IN DIAGNOSTIC OR THERAPEUTIC APPLICATIONS.



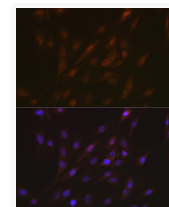
Immunoprecipitation analysis of 200 Mu g extracts of Rat lung using 3 Mu g ASC/TMS1 antibody (STJ119089). Western blot was performed from the immunoprecipitate using ASC/TMS1 antibody (STJ119089) at a dilution of 1:1000.



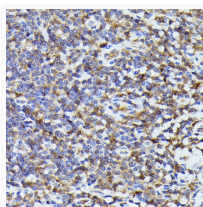
Immunofluorescence analysis of U-2 OS cells using ASC/TMS1 Rabbit polyclonal antibody (STJ119089) at dilution of 1:100 (40x lens). Secondary antibody: Cy3 Goat Anti-Rabbit IgG (H+L) at 1:500 dilution. Blue: DAPI for nuclear staining.



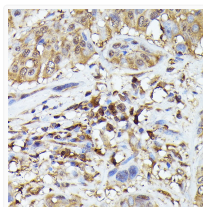
Immunofluorescence analysis of NIH-3T3 cells using ASC/TMS1 Rabbit polyclonal antibody (STJ119089) at dilution of 1:100 (40x lens). Secondary antibody: Cy3 Goat Anti-Rabbit IgG (H+L) at 1:500 dilution. Blue: DAPI for nuclear staining.



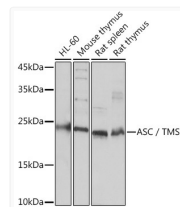
Immunofluorescence analysis of C6 cells using ASC/TMS1 Rabbit polyclonal antibody (STJ119089) at dilution of 1:100 (40x lens). Secondary antibody: Cy3 Goat Anti-Rabbit IgG (H+L) at 1:500 dilution. Blue: DAPI for nuclear staining.



Immunohistochemistry analysis of ASC/TMS1 in paraffin-embedded human tonsil using ASC/TMS1 Rabbit polyclonal antibody (STJ119089) at dilution of 1:200 (40x lens). Perform high pressure antigen retrieval with 10 mM citrate buffer pH 6.0 before commencing with immunohistochemistry staining protocol.



Immunohistochemistry analysis of ASC/TMS1 in paraffin-embedded human esophageal cancer using ASC/TMS1 Rabbit polyclonal antibody (STJ119089) at dilution of 1:200 (40x lens). Perform high pressure antigen retrieval with 10 mM citrate buffer pH 6.0 before commencing with immunohistochemistry staining protocol.



Western blot analysis of various lysates using ASC/TMS1 Rabbit polyclonal antibody (STJ119089) at 1:3000 dilution. Secondary antibody: HRP Goat Anti-Rabbit IgG (H+L) (STJS000856) at 1:10000 dilution. Lysates/proteins: 25 Mu g per lane. Blocking buffer: 3% nonfat dry milk in TBST. Detection: ECL Basic Kit. Exposure time: 10s.