

## Anti-EIF4EBP1 antibody (1-118) (STJ119085)

### GENERAL INFORMATION

Product Type	Primary antibodies
Applications	IHC-P/ELISA
Host / Source	Rabbit
Reactivity	Human/Mouse/Rat

### PRODUCT PROPERTIES

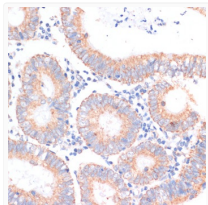
Clonality	Polyclonal
Concentration	Lot specific
Conjugation	Unconjugated
Purification	Affinity purification
Dilution Range	IHC-P:1:50-1:200 ELISA:Recommended starting concentration is 1 µg/mL. Please optimize the concentration based on your specific assay requirements.
Formulation	PBS with 0.02% Sodium Azide, 50% Glycerol, pH 7.3.
Isotype	IgG
Molecular Weight	Protein Mw: 13kDa Observed Mw:
Storage Instruction	Store at -20°C for up to 1 year from the date of receipt, and avoid repeat freeze-thaw cycles.

### TARGET INFORMATION

Gene ID	<a href="#">1978</a>
Gene Symbol	<a href="#">EIF4EBP1</a>
UniProt ID	<a href="#">4EBP1_HUMAN</a>
Immunogen Region	1-118
Immunogen Sequence	MSGGSSCSQTPSRAIPATRR VVLGDGVQLPPGDYSTTPGG TLFSTTPGGTRIIYDRKFLM ECRNSPVTKTPPRDLPTIPG VTSPSSDEPPMEASQSHLRN SPEDKRAGGEESQFEMDI
Specificity	Recombinant fusion protein containing a sequence corresponding to amino acids 1-118 of human eIF4EBP1 (NP_004086.1).

### ADDITIONAL INFORMATION

Note STRICTLY FOR FURTHER SCIENTIFIC RESEARCH USE ONLY (RUO). MUST NOT TO BE USED IN DIAGNOSTIC OR THERAPEUTIC APPLICATIONS.



Immunohistochemistry analysis of paraffin-embedded human colon carcinoma using eIF4EBP1 antibody (STJ119085) at dilution of 1:100 (40x lens). Perform microwave antigen retrieval with 10 mM PBS buffer pH 7.2 before commencing with immunohistochemistry staining protocol.