

## Anti-ATXN2 antibody (1250-1331) (STJ119084)

### GENERAL INFORMATION

Product Type	Primary antibodies
Applications	WB/IHC-P/IF/ICC/ELISA
Host / Source	Rabbit
Reactivity	Human/Mouse/Rat

### PRODUCT PROPERTIES

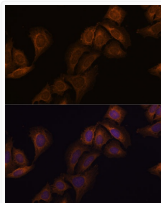
Clonality	Polyclonal
Concentration	Lot specific
Conjugation	Unconjugated
Purification	Affinity purification
Dilution Range	WB:1:500-1:2000 IHC-P:1:50-1:200 IF/ICC:1:50-1:200 ELISA:Recommended starting concentration is 1 µg/mL. Please optimize the concentration based on your specific assay requirements.
Formulation	PBS with 0.05% Proclin300, 50% Glycerol, pH 7.3.
Isotype	IgG
Molecular Weight	Protein Mw: 140kDa Observed Mw: 150kDa
Storage Instruction	Store at -20°C for up to 1 year from the date of receipt, and avoid repeat freeze-thaw cycles.

### TARGET INFORMATION

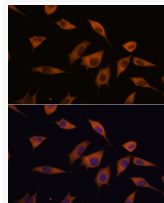
Gene ID	<a href="#">6311</a>
Gene Symbol	<a href="#">ATXN2</a>
UniProt ID	<a href="#">ATX2_HUMAN</a>
Immunogen Region	1250-1331
Immunogen Sequence	HVQSGMVPSPHTAHAPMMLM TTQPPGGPQAALQASALQPI PVSTTAHFPYMTSPVQAAH QQQL
Specificity	A synthetic peptide corresponding to a sequence within amino acids 1250-1331 of human ATXN2 (NP_002964.3).

### ADDITIONAL INFORMATION

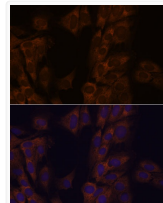
Note STRICTLY FOR FURTHER SCIENTIFIC RESEARCH USE ONLY (RUO). MUST NOT TO BE USED IN DIAGNOSTIC OR THERAPEUTIC APPLICATIONS.



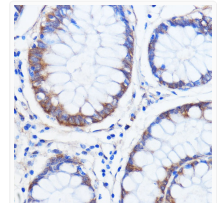
Immunofluorescence analysis of U-2 OS cells using ATXN2 antibody (STJ119084) at dilution of 1:100. Blue: DAPI for nuclear staining.



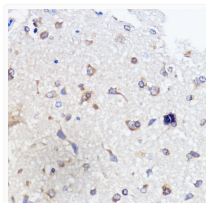
Immunofluorescence analysis of L929 cells using ATXN2 antibody (STJ119084) at dilution of 1:100. Blue: DAPI for nuclear staining.



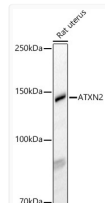
Immunofluorescence analysis of C6 cells using ATXN2 antibody (STJ119084) at dilution of 1:100. Blue: DAPI for nuclear staining.



Immunohistochemistry analysis of paraffin-embedded human colon carcinoma using ATXN2 antibody (STJ119084) at dilution of 1:100 (40x lens). Perform microwave antigen retrieval with 10 mM PBS buffer pH 7.2 before commencing with immunohistochemistry staining protocol.



Immunohistochemistry analysis of paraffin-embedded rat brain using ATXN2 antibody (STJ119084) at dilution of 1:100 (40x lens). Perform microwave antigen retrieval with 10 mM PBS buffer pH 7.2 before commencing with immunohistochemistry staining protocol.



Western blot analysis of Rat uterus, using ATXN2 Rabbit polyclonal antibody (STJ119084) at 1:500 dilution. Secondary antibody: HRP Goat Anti-Rabbit IgG (H+L) (STJS000856) at 1:10000 dilution. Lysates/proteins: 25 µg per lane. Blocking buffer: 3% nonfat dry milk in TBST. Detection: ECL Basic Kit. Exposure time: 90s.