

Anti-UGT2B15 antibody (60-190) (STJ119076)

GENERAL INFORMATION

| | |
|---------------|--------------------|
| Product Type | Primary antibodies |
| Applications | WB/IHC-P/ELISA |
| Host / Source | Rabbit |
| Reactivity | Human/Mouse/Rat |

PRODUCT PROPERTIES

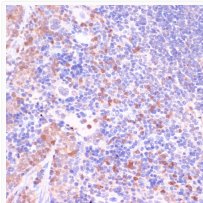
| | |
|---------------------|---------------------------------------------------------------------------------------------------------------------------------------------------------------------------|
| Clonality | Polyclonal |
| Concentration | Lot specific |
| Conjugation | Unconjugated |
| Purification | Affinity purification |
| Dilution Range | WB:1:500-1:2000 IHC-P:1:100-1:200 ELISA:Recommended starting concentration is 1 µg/mL. Please optimize the concentration based on your specific assay requirements. |
| Formulation | PBS with 0.01% Thimerosal, 50% Glycerol, pH 7.3. |
| Isotype | IgG |
| Molecular Weight | Protein Mw: 61kDa Observed Mw: 61kDa |
| Storage Instruction | Store at -20°C for up to 1 year from the date of receipt, and avoid repeat freeze-thaw cycles. |

TARGET INFORMATION

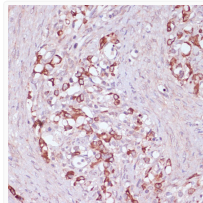
| | |
|--------------------|---------------------------------------------------------------------------------------------------------------------------------------------|
| Gene ID | 7366 |
| Gene Symbol | UGT2B15 |
| UniProt ID | UDB15_HUMAN |
| Immunogen Region | 60-190 |
| Immunogen Sequence | ASTLVNASKSSAIKLEVYPT SLTKNYLEDLLKILDRWIY GVSKNTFWSYFSQLQELCWE YYDYSNKLCKDAVLNKKLMM KLQESKFDVILADALNPCGE LLAELFNIPFLYSLRFSVGY TFEKNGGGFLF |
| Specificity | Recombinant fusion protein containing a sequence corresponding to amino acids 60-190 of human UGT2B15 (NP_001067.2). |

ADDITIONAL INFORMATION

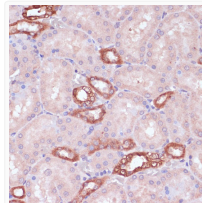
Note STRICTLY FOR FURTHER SCIENTIFIC RESEARCH USE ONLY (RUO). MUST NOT TO BE USED IN DIAGNOSTIC OR THERAPEUTIC APPLICATIONS.



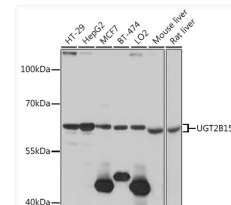
Immunohistochemistry analysis of UGT2B15 in paraffin-embedded mouse spleen using UGT2B15 Rabbit polyclonal antibody (STJ119076) at dilution of 1:100 (40x lens). Perform microwave antigen retrieval with 10 mM PBS buffer pH 7.2 before commencing with immunohistochemistry staining protocol.



Immunohistochemistry analysis of UGT2B15 in paraffin-embedded human oophoroma using UGT2B15 Rabbit polyclonal antibody (STJ119076) at dilution of 1:100 (40x lens). Perform microwave antigen retrieval with 10 mM PBS buffer pH 7.2 before commencing with immunohistochemistry staining protocol.



Immunohistochemistry analysis of UGT2B15 in paraffin-embedded rat kidney using UGT2B15 Rabbit polyclonal antibody (STJ119076) at dilution of 1:100 (40x lens). Perform microwave antigen retrieval with 10 mM PBS buffer pH 7.2 before commencing with immunohistochemistry staining protocol.



Western blot analysis of various lysates using UGT2B15 Rabbit polyclonal antibody (STJ119076) at 1:1000 dilution. Secondary antibody: HRP Goat Anti-Rabbit IgG (H+L) (STJS000856) at 1:10000 dilution. Lysates/proteins: 25 µg per lane. Blocking buffer: 3% nonfat dry milk in TBST. Detection: ECL Basic Kit. Exposure time: 5s.