

## Anti-OGFOD1 antibody (1-140) (STJ118970)

### GENERAL INFORMATION

Product Type	Primary antibodies
Applications	WB/ELISA
Host / Source	Rabbit
Reactivity	Human

### PRODUCT PROPERTIES

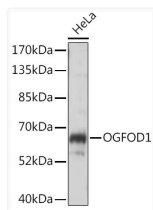
Clonality	Polyclonal
Concentration	Lot specific
Conjugation	Unconjugated
Purification	Affinity purification
Dilution Range	WB:1:500-1:2000 ELISA:Recommended starting concentration is 1 Mu g/mL. Please optimize the concentration based on your specific assay requirements.
Formulation	PBS with 0.01% Thimerosal, 50% Glycerol, pH 7.3.
Isotype	IgG
Molecular Weight	Protein Mw: 63kDa Observed Mw: 63kDa
Storage Instruction	Store at-20°C for up to 1 year from the date of receipt, and avoid repeat freeze-thaw cycles.

### TARGET INFORMATION

Gene ID	<a href="#">55239</a>
Gene Symbol	<a href="#">OGFOD1</a>
UniProt ID	<a href="#">OGFD1_HUMAN</a>
Immunogen Region	1-140
Immunogen Sequence	MNGKRPAEPGPARVGGKGGK EVMAEFSDAVTEETLKKQVA EAWSRRTPPFSHEVIVMDMDP FLHCVIPNFIQSQDFLEGLQ KELMNLDFHEKYNDLYKFQQ SDDLKRRREPHISTLRKILF EDFRSWLSDISKIDLESTID
Specificity	Recombinant fusion protein containing a sequence corresponding to amino acids 1-140 of human OGFOD1 (NP_060703.3).

### ADDITIONAL INFORMATION

Note **STRICTLY FOR FURTHER SCIENTIFIC RESEARCH USE ONLY (RUO). MUST NOT TO BE USED IN DIAGNOSTIC OR THERAPEUTIC APPLICATIONS.**



Western blot analysis of lysates from HeLa cells, using OGFOD1 Rabbit polyclonal antibody (STJ118970) at 1:1000 dilution. Secondary antibody: HRP Goat Anti-Rabbit IgG (H+L) (STJS000856) at 1:10000 dilution. Lysates/proteins: 25 Mu g per lane. Blocking buffer: 3% nonfat dry milk in TBST. Detection: ECL Basic Kit. Exposure time: 5s.