

Anti-HEBP2 antibody (1-205) (STJ118931)

GENERAL INFORMATION

Product Type	Primary antibodies
Applications	WB/IHC-P/IF/ICC/ELISA
Host / Source	Rabbit
Reactivity	Human/Mouse/Rat

PRODUCT PROPERTIES

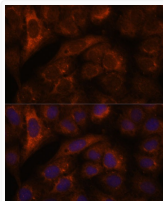
Clonality	Polyclonal
Concentration	Lot specific
Conjugation	Unconjugated
Purification	Affinity purification
Dilution Range	WB:1:500-1:2000 IHC-P:1:50-1:200 IF/CC:1:50-1:200 ELISA:Recommended starting concentration is 1 Mu g/mL. Please optimize the concentration based on your specific assay requirements.
Formulation	PBS with 0.01% Thimerosal, 50% Glycerol, pH 7.3.
Isotype	IgG
Molecular Weight	Protein Mw: 23kDa Observed Mw: 25kDa
Storage Instruction	Store at -20°C for up to 1 year from the date of receipt, and avoid repeat freeze-thaw cycles.

TARGET INFORMATION

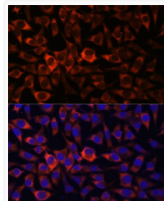
Gene ID	23593
Gene Symbol	HEBP2
UniProt ID	HEBP2_HUMAN
Immunogen Region	1-205
Immunogen Sequence	MAEPLQDPDGAEEAADAQAV ETPGWKAPEDAGPQPGSYEI RHYGPAKWVSTSVESMDWDS AIQTGFTKLSYIQGKNEKE MKIKMTAPVTSYVEPGSGPF SESTITISLYIPSEQQFDPP RPLESDVFIEDRAEMTVFVR SFDGFSQAQKNQEQLLTLAS ILREDGKVFDEKVVYYTAGYN SPVKLLNFRNNEVWLIQKNEP TKENE
Specificity	Recombinant fusion protein containing a sequence corresponding to amino acids 1-205 of human HEBP2 (NP_055135.1).

ADDITIONAL INFORMATION

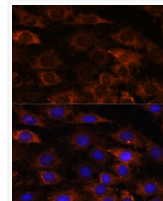
Note	STRICTLY FOR FURTHER SCIENTIFIC RESEARCH USE ONLY (RUO). MUST NOT TO BE USED IN DIAGNOSTIC OR THERAPEUTIC APPLICATIONS.
------	---



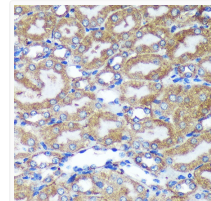
Immunofluorescence analysis of U-2 OS cells using HEBP2 Rabbit polyclonal antibody (STJ118931) at dilution of 1:100. Secondary antibody: Cy3 Goat Anti-Rabbit IgG (H+L) at 1:500 dilution. Blue: DAPI for nuclear staining.



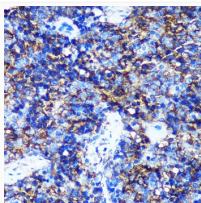
Immunofluorescence analysis of L929 cells using HEBP2 Rabbit polyclonal antibody (STJ118931) at dilution of 1:100. Secondary antibody: Cy3 Goat Anti-Rabbit IgG (H+L) at 1:500 dilution. Blue: DAPI for nuclear staining.



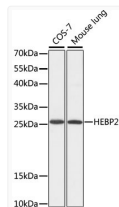
Immunofluorescence analysis of C6 cells using HEBP2 Rabbit polyclonal antibody (STJ118931) at dilution of 1:100. Secondary antibody: Cy3 Goat Anti-Rabbit IgG (H+L) at 1:500 dilution. Blue: DAPI for nuclear staining.



Immunohistochemistry analysis of HEBP2 in paraffin-embedded Mouse kidney using HEBP2 Rabbit polyclonal antibody (STJ118931) at dilution of 1:100 (40x lens). Perform microwave antigen retrieval with 10 mM PBS buffer pH 7.2 before commencing with immunohistochemistry staining protocol.



Immunohistochemistry analysis of HEBP2 in paraffin-embedded Rat spleen using HEBP2 Rabbit polyclonal antibody (STJ118931) at dilution of 1:100 (40x lens). Perform microwave antigen retrieval with 10 mM PBS buffer pH 7.2 before commencing with immunohistochemistry staining protocol.



Western blot analysis of various lysates using HEBP2 Rabbit polyclonal antibody (STJ118931) at 1:1000 dilution. Secondary antibody: HRP Goat Anti-Rabbit IgG (H+L) (STJS000856) at 1:10000 dilution. Lysates/proteins: 25 Mu g per lane. Blocking buffer: 3% nonfat dry milk in TBST. Detection: ECL Basic Kit. Exposure time: 30s.