

## Anti-CAND2 antibody (850-1000) (STJ118927)

### GENERAL INFORMATION

Product Type	Primary antibodies
Applications	WB/IHC-P/ELISA
Host / Source	Rabbit
Reactivity	Human/Mouse/Rat

### PRODUCT PROPERTIES

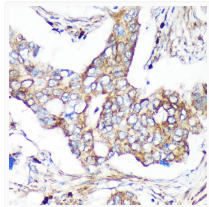
Clonality	Polyclonal
Concentration	Lot specific
Conjugation	Unconjugated
Purification	Affinity purification
Dilution Range	WB:1:500-1:2000 IHC-P:1:50-1:200 ELISA:Recommended starting concentration is 1 µg/mL. Please optimize the concentration based on your specific assay requirements.
Formulation	PBS with 0.01% Thimerosal, 50% Glycerol, pH 7.3.
Isotype	IgG
Molecular Weight	Protein Mw: 135kDa Observed Mw: 130kDa
Storage Instruction	Store at -20°C for up to 1 year from the date of receipt, and avoid repeat freeze-thaw cycles.

### TARGET INFORMATION

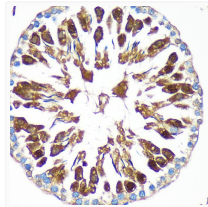
Gene ID	<a href="#">23066</a>
Gene Symbol	<a href="#">CAND2</a>
UniProt ID	<a href="#">CAND2_HUMAN</a>
Immunogen Region	850-1000
Immunogen Sequence	VGQVAGPGHQRELKAVLLEA LGSPSEDVRAAASYALGRVG AGSLPDFLPFLLEQIEAEPR RQYLLHSLREALGAAQPDS LKPYAEDIWALLFQRCGAE EGTRGVVAECIGKLVLVNPS FLLPRLRKQLAAGRPHTRST VITAVKFLISD
Specificity	Recombinant fusion protein containing a sequence corresponding to amino acids 850-1000 of human CAND2 (NP_001155971.1).

### ADDITIONAL INFORMATION

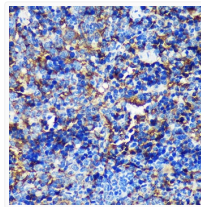
Note **STRICTLY FOR FURTHER SCIENTIFIC RESEARCH USE ONLY (RUO). MUST NOT TO BE USED IN DIAGNOSTIC OR THERAPEUTIC APPLICATIONS.**



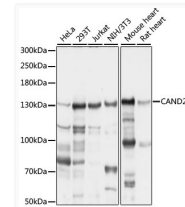
Immunohistochemistry analysis of CAND2 in paraffin-embedded Human colon carcinoma using CAND2 Rabbit polyclonal antibody (STJ118927) at dilution of 1:100 (40x lens). Perform microwave antigen retrieval with 10 mM PBS buffer pH 7.2 before commencing with immunohistochemistry staining protocol.



Immunohistochemistry analysis of CAND2 in paraffin-embedded Rat testis using CAND2 Rabbit polyclonal antibody (STJ118927) at dilution of 1:100 (40x lens). Perform microwave antigen retrieval with 10 mM PBS buffer pH 7.2 before commencing with immunohistochemistry staining protocol.



Immunohistochemistry analysis of CAND2 in paraffin-embedded Mouse spleen using CAND2 Rabbit polyclonal antibody (STJ118927) at dilution of 1:100 (40x lens). Perform microwave antigen retrieval with 10 mM PBS buffer pH 7.2 before commencing with immunohistochemistry staining protocol.



Western blot analysis of various lysates using CAND2 Rabbit polyclonal antibody (STJ118927) at 1:1000 dilution. Secondary antibody: HRP Goat Anti-Rabbit IgG (H+L) (STJS000856) at 1:10000 dilution. Lysates/proteins: 25 µg per lane. Blocking buffer: 3% nonfat dry milk in TBST. Detection: ECL Basic Kit. Exposure time: 15s.