

Anti-FAM107A antibody (1-144) (STJ118921)

GENERAL INFORMATION

Product Type	Primary antibodies
Applications	WB/ELISA
Host / Source	Rabbit
Reactivity	Human/Mouse

PRODUCT PROPERTIES

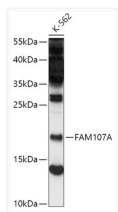
Clonality	Polyclonal
Concentration	Lot specific
Conjugation	Unconjugated
Purification	Affinity purification
Dilution Range	WB:1:500-1:2000 ELISA:Recommended starting concentration is 1 µg/mL. Please optimize the concentration based on your specific assay requirements.
Formulation	PBS with 0.01% Thimerosal, 50% Glycerol, pH 7.3.
Isotype	IgG
Molecular Weight	Protein Mw: 17kDa Observed Mw: 18kDa
Storage Instruction	Store at -20°C for up to 1 year from the date of receipt, and avoid repeat freeze-thaw cycles.

TARGET INFORMATION

Gene ID	11170
Gene Symbol	FAM107A
UniProt ID	F107A_HUMAN
Immunogen Region	1-144
Immunogen Sequence	MYSEIQRERADIGGLMARPE YREWNPELIKPKKLLNPVKA SRSHQELHRELLMNHRRGLG VDSKPELQRVLEHRRRNQLI KKKKEELEAKRLQCPFEQEL LRRQQLRNQLEKPPKEEDH APEFIKVVRENLRRIATLTSE EREL
Specificity	Recombinant fusion protein containing a sequence corresponding to amino acids 1-144 of human FAM107A (NP_009108.1).

ADDITIONAL INFORMATION

Note STRICTLY FOR FURTHER SCIENTIFIC RESEARCH USE ONLY (RUO). MUST NOT TO BE USED IN DIAGNOSTIC OR THERAPEUTIC APPLICATIONS.



Western blot analysis of lysates from K-562 cells, using FAM107A Rabbit polyclonal antibody (STJ118921) at 1:500 dilution. Secondary antibody: HRP Goat Anti-Rabbit IgG (H+L) (STJS000856) at 1:10000 dilution. Lysates/proteins: 25 µg per lane. Blocking buffer: 3% nonfat dry milk in TBST. Detection: ECL Basic Kit. Exposure time: 60s.