

Anti-HPSE antibody (36-543) (STJ118915)

GENERAL INFORMATION

Product Type	Primary antibodies
Applications	WB/IHC-P/IF/ICC/ELISA
Host / Source	Rabbit
Reactivity	Human/Mouse/Rat

PRODUCT PROPERTIES

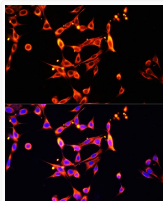
Clonality	Polyclonal
Concentration	Lot specific
Conjugation	Unconjugated
Purification	Affinity purification
Dilution Range	WB:1:500-1:2000 IHC-P:1:50-1:200 IF/ICC:1:50-1:200 ELISA:Recommended starting concentration is 1 Mu g/mL. Please optimize the concentration based on your specific assay requirements.
Formulation	PBS with 0.09% Sodium Azide, 50% Glycerol, pH7.3.
Isotype	IgG
Molecular Weight	Protein Mw: 61kDa Observed Mw: 50kDa/65kDa
Storage Instruction	Store at -20°C for up to 1 year from the date of receipt, and avoid repeat freeze-thaw cycles.

TARGET INFORMATION

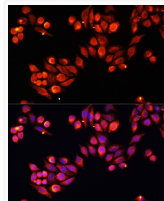
Gene ID	10855
Gene Symbol	HPSE
UniProt ID	HPSE_HUMAN
Immunogen Region	36-543
Immunogen Sequence	QDVVDLDFFTQEPLHLVSPS FLSVTIDANLATDPRFLILL GSPKLRTRLARGLSPAYLRFG GKTDLFLIFDPKKESTFEER SYWQSQVNQDICKYGSIPPD VEEKLRLEWPYQEQLLREH YQKFKNSTYSRSSVDVLYT FANCSGLDLIFGLNALLRTA DLQWNSSNAQLLLDYCSSKG YNIISWELGNPNPNSFLKKADI FINGSQLGEDFIQLHKLLRK STFKNAKLYGPDVVGQPRRK
Specificity	Recombinant fusion protein containing a sequence corresponding to amino acids 36-275 of human Heparanase 1 (NP_001092010.1).

ADDITIONAL INFORMATION

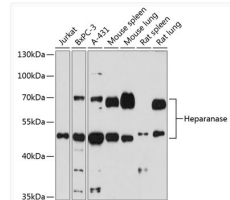
Note **STRICTLY FOR FURTHER SCIENTIFIC RESEARCH USE ONLY (RUO). MUST NOT TO BE USED IN DIAGNOSTIC OR THERAPEUTIC APPLICATIONS.**



Immunofluorescence analysis of NIH/3T3 cells using Heparanase 1 Rabbit polyclonal antibody (STJ118915) at dilution of 1:100. Secondary antibody: Cy3 Goat Anti-Rabbit IgG (H+L) at 1:500 dilution. Blue: DAPI for nuclear staining.



Immunofluorescence analysis of HeLa cells using Heparanase 1 Rabbit polyclonal antibody (STJ118915) at dilution of 1:100. Secondary antibody: Cy3 Goat Anti-Rabbit IgG (H+L) at 1:500 dilution. Blue: DAPI for nuclear staining.



Western blot analysis of various lysates using Heparanase 1 Rabbit polyclonal antibody (STJ118915) at 1:1000 dilution. Secondary antibody: HRP Goat Anti-Rabbit IgG (H+L) (STJS000856) at 1:10000 dilution. Lysates/proteins: 25 Mu g per lane. Blocking buffer: 3% nonfat dry milk in TBST. Detection: ECL Basic Kit. Exposure time: 30s.