

Anti-CUL3 antibody (569-768) (STJ118883)

GENERAL INFORMATION

Product Type	Primary antibodies
Applications	WB/IF/ICC/ELISA
Host / Source	Rabbit
Reactivity	Human/Mouse/Rat

PRODUCT PROPERTIES

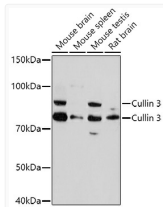
Clonality	Polyclonal
Concentration	Lot specific
Conjugation	Unconjugated
Purification	Affinity purification
Dilution Range	WB:1:500-1:1000 IF/CC:1:50-1:200 ELISA:Recommended starting concentration is 1 μ g/mL. Please optimize the concentration based on your specific assay requirements.
Formulation	PBS with 0.01% Thimerosal, 50% Glycerol, pH 7.3.
Isotype	IgG
Molecular Weight	Protein Mw: 89kDa Observed Mw: 82kDa
Storage Instruction	Store at -20°C for up to 1 year from the date of receipt, and avoid repeat freeze-thaw cycles.

TARGET INFORMATION

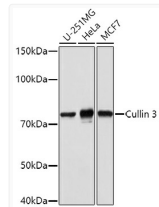
Gene ID	8452
Gene Symbol	CUL3
UniProt ID	CUL3_HUMAN
Immunogen Region	569-768
Immunogen Sequence	KEDGSEVGVGGAQVTSNTR KHILQVSTFQMTILMLFNRR EKYTFEEIQQETDIPERELV RALQSLACGKPTQRVLTKEP KSKEIENGHIFTVNDQFTSK LHRVKIQTVAAKQGESDPER KETRQKVVDDDRKHEIEAAIV RIMKSRKKMQHNVLVAEVTQ QLKARFLPSPVVIKKRIEGL IEREYLARTPEDRKVYTYVA
Specificity	Recombinant fusion protein containing a sequence corresponding to amino acids 569-768 of human Cullin 3 (NP_003581.1).

ADDITIONAL INFORMATION

Note **STRICTLY FOR FURTHER SCIENTIFIC RESEARCH USE ONLY (RUO). MUST NOT TO BE USED IN DIAGNOSTIC OR THERAPEUTIC APPLICATIONS.**



Western blot analysis of various lysates using Cullin 3 Rabbit polyclonal antibody (STJ118883) at 1:1000 dilution. Secondary antibody: HRP Goat Anti-Rabbit IgG (H+L) (STJS000856) at 1:10000 dilution. Lysates/proteins: 25 μ g per lane. Blocking buffer: 3% nonfat dry milk in TBST. Detection: ECL Basic Kit. Exposure time: 180s.



Western blot analysis of various lysates using Cullin 3 Rabbit polyclonal antibody (STJ118883) at 1:1000 dilution. Secondary antibody: HRP Goat Anti-Rabbit IgG (H+L) (STJS000856) at 1:10000 dilution. Lysates/proteins: 25 μ g per lane. Blocking buffer: 3% nonfat dry milk in TBST. Detection: ECL Basic Kit. Exposure time: 30s.