

Anti-BRAP antibody (1-200) (STJ118879)

GENERAL INFORMATION

Product Type	Primary antibodies
Applications	WB/IHC-P/ELISA
Host / Source	Rabbit
Reactivity	Human/Mouse/Rat

PRODUCT PROPERTIES

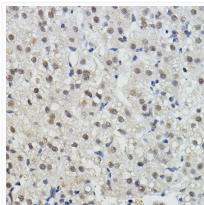
Clonality	Polyclonal
Concentration	Lot specific
Conjugation	Unconjugated
Purification	Affinity purification
Dilution Range	WB:1:500-1:2000 IHC-P:1:50-1:200 ELISA:Recommended starting concentration is 1 µg/mL. Please optimize the concentration based on your specific assay requirements.
Formulation	PBS with 0.01% Thimerosal, 50% Glycerol, pH 7.3.
Isotype	IgG
Molecular Weight	Protein Mw: 67kDa Observed Mw: 72kDa
Storage Instruction	Store at -20°C for up to 1 year from the date of receipt, and avoid repeat freeze-thaw cycles.

TARGET INFORMATION

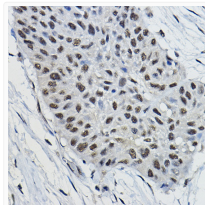
Gene ID	8315
Gene Symbol	BRAP
UniProt ID	BRAP_HUMAN
Immunogen Region	1-200
Immunogen Sequence	MSVSLVIRLELAEHSPVPA GFGFSAAGEMSDEEIKKTT LASAVACLEGKSPGKVAII QHHLGRREMTDVIETMKSND PDELKTTVEERKSSEASPTA QRSKDHKKECINAAPDPSPK QLPDQISFFSGNPSVEIVHG IMHLYKTNKMTSLKEDVRRS AMLCILTVPAAAMTSHDLMKF VAPFNEVIEQMKIIRDSTPN
Specificity	Recombinant fusion protein containing a sequence corresponding to amino acids 1-200 of human BRAP (NP_006759.3).

ADDITIONAL INFORMATION

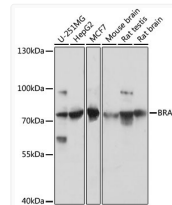
Note **STRICTLY FOR FURTHER SCIENTIFIC RESEARCH USE ONLY (RUO). MUST NOT TO BE USED IN DIAGNOSTIC OR THERAPEUTIC APPLICATIONS.**



Immunohistochemistry analysis of BRAP in paraffin-embedded human liver cancer using BRAP Rabbit polyclonal antibody (STJ118879) at dilution of 1:100 (40x lens). Perform high pressure antigen retrieval with 10 mM citrate buffer pH 6.0 before commencing with immunohistochemistry staining protocol.



Immunohistochemistry analysis of BRAP in paraffin-embedded human lung cancer using BRAP Rabbit polyclonal antibody (STJ118879) at dilution of 1:100 (40x lens). Perform high pressure antigen retrieval with 10 mM citrate buffer pH 6.0 before commencing with immunohistochemistry staining protocol.



Western blot analysis of various lysates using BRAP Rabbit polyclonal antibody (STJ118879) at 1:3000 dilution. Secondary antibody: HRP Goat Anti-Rabbit IgG (H+L) (STJS000856) at 1:10000 dilution. Lysates/proteins: 25 µg per lane. Blocking buffer: 3% nonfat dry milk in TBST. Detection: ECL Basic Kit. Exposure time: 10s.