

Anti-TOP2A antibody (1100-1200) (STJ118868)

GENERAL INFORMATION

Product Type	Primary antibodies
Applications	WB/ELISA
Host / Source	Rabbit
Reactivity	Human

PRODUCT PROPERTIES

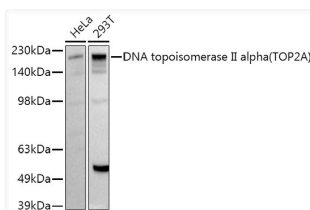
Clonality	Polyclonal
Concentration	Lot specific
Conjugation	Unconjugated
Purification	Affinity purification
Dilution Range	WB:1:500-1:1000 ELISA:Recommended starting concentration is 1 Mu g/mL. Please optimize the concentration based on your specific assay requirements.
Formulation	PBS with 0.05% Proclin300, 50% Glycerol, pH 7.3.
Isotype	IgG
Molecular Weight	Protein Mw: 174kDa Observed Mw: 190kDa
Storage Instruction	Store at -20°C for up to 1 year from the date of receipt, and avoid repeat freeze-thaw cycles.

TARGET INFORMATION

Gene ID	7153
Gene Symbol	TOP2A
UniProt ID	TOP2A_HUMAN
Immunogen Region	1100-1200
Immunogen Sequence	EEENEESDNEKETEKSDSVT DSGPTFNLYLLDMPLWYLTKE KKDELCLRLRNEKEQELDTLK RKSPSDLWKEDLATFIEELE AVEAKEKQDEQVGLPGKGGK A
Specificity	A synthetic peptide corresponding to a sequence within amino acids 1100-1200 of human DNA topoisomerase II alpha (TOP2A) (NP_001058.2).

ADDITIONAL INFORMATION

Note STRICTLY FOR FURTHER SCIENTIFIC RESEARCH USE ONLY (RUO). MUST NOT TO BE USED IN DIAGNOSTIC OR THERAPEUTIC APPLICATIONS.



Western blot analysis of extracts of various cell lines, using DNA topoisomerase II alpha (TOP2A) antibody (STJ118868) at 1:1000 dilution. Secondary antibody: HRP Goat Anti-Rabbit IgG (H+L) (STJS000856) at 1:10000 dilution. Lysates/proteins: 25 Mu g per lane. Blocking buffer: 3% nonfat dry milk in TBST. Detection: ECL Basic Kit. Exposure time: 30s.