

Anti-MAD2L1 antibody (1-205) (STJ118823)

GENERAL INFORMATION

| | |
|---------------|--------------------|
| Product Type | Primary antibodies |
| Applications | IHC-P/IF/ICC/ELISA |
| Host / Source | Rabbit |
| Reactivity | Human/Mouse/Rat |

PRODUCT PROPERTIES

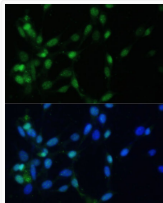
| | |
|---------------------|---|
| Clonality | Polyclonal |
| Concentration | Lot specific |
| Conjugation | Unconjugated |
| Purification | Affinity purification |
| Dilution Range | IHC-P:1:50-1:200 IF/CC:1:50-1:200 ELISA:Recommended starting concentration is 1 µg/mL. Please optimize the concentration based on your specific assay requirements. |
| Formulation | PBS with 0.01% Thimerosal, 50% Glycerol, pH 7.3. |
| Isotype | IgG |
| Molecular Weight | Protein Mw: 24kDa Observed Mw: |
| Storage Instruction | Store at -20°C for up to 1 year from the date of receipt, and avoid repeat freeze-thaw cycles. |

TARGET INFORMATION

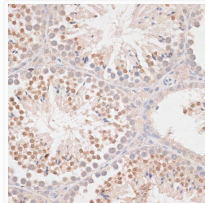
| | |
|--------------------|---|
| Gene ID | 4085 |
| Gene Symbol | MAD2L1 |
| UniProt ID | MD2L1_HUMAN |
| Immunogen Region | 1-205 |
| Immunogen Sequence | MALQLSREQGITLRGSAEIV AEFSSFGINSILYQRGIYPS ETFTRVQKYGLTLLVTTDL LIKLYLNNVVEQLKDWLYKCS VQKLVVVISNIESGEVLERW QFDIECDKTAKDDSA PREKS QKAIQDEIRSVIRQITATVT FLPLELVSCSFLLIYTDKD LVVPEKWEESG PQFITNSEE VRLRSFTTIIHKVNSMVAYK IPVND |
| Specificity | Recombinant fusion protein containing a sequence corresponding to amino acids 1-205 of human MAD2/MAD2/MAD2L1 (NP_002349.1). |

ADDITIONAL INFORMATION

Note **STRICTLY FOR FURTHER SCIENTIFIC RESEARCH USE ONLY (RUO). MUST NOT TO BE USED IN DIAGNOSTIC OR THERAPEUTIC APPLICATIONS.**



Immunofluorescence analysis of NIH-3T3 cells using MAD2/MAD2L1 Rabbit polyclonal antibody (STJ118823) at dilution of 1:100 (40x lens). Secondary antibody: Cy3 Goat Anti-Rabbit IgG (H+L) at 1:500 dilution. Blue: DAPI for nuclear staining.



Immunohistochemistry analysis of MAD2/MAD2L1 in paraffin-embedded mouse testis using MAD2/MAD2L1 Rabbit polyclonal antibody (STJ118823) at dilution of 1:100 (40x lens). Perform microwave antigen retrieval with 10 mM PBS buffer pH 7.2 before commencing with immunohistochemistry staining protocol.